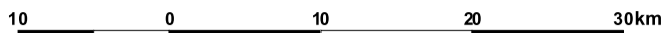




MARY RIVER CATCHMENT STUDY OF CASUARINA AND EUCALYPTUS DECLINE.

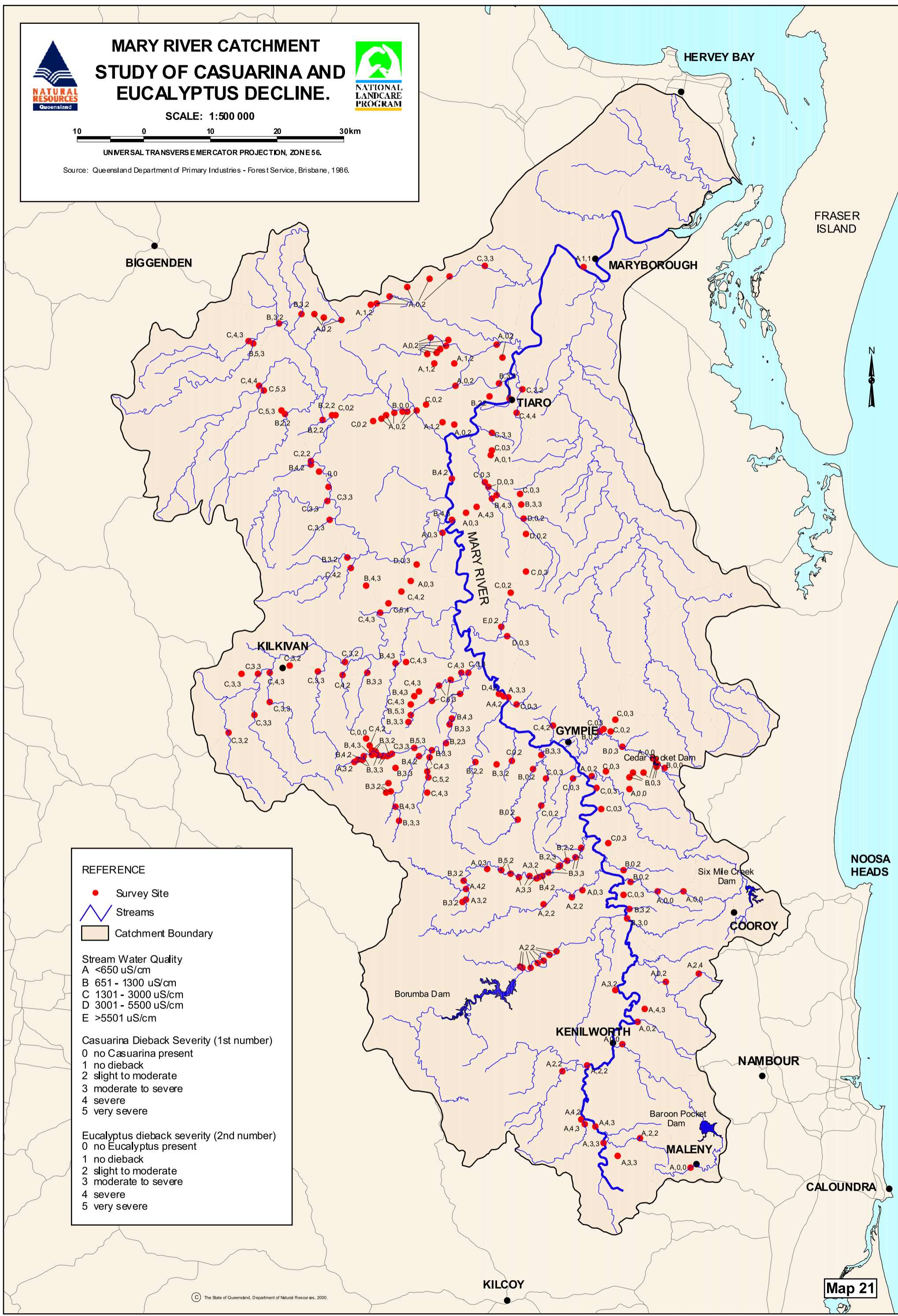


SCALE: 1:500 000



UNIVERSAL TRANSVERSE MERCATOR PROJECTION, ZONE 56.

Source: Queensland Department of Primary Industries - Forest Service, Brisbane, 1986.



REFERENCE

- Survey Site
- Streams
- Catchment Boundary

Stream Water Quality

- A <650 uS/cm
- B 651 - 1300 uS/cm
- C 1301 - 3000 uS/cm
- D 3001 - 5500 uS/cm
- E >5501 uS/cm

Casuarina Dieback Severity (1st number)

- 0 no Casuarina present
- 1 no dieback
- 2 slight to moderate
- 3 moderate to severe
- 4 severe
- 5 very severe

Eucalyptus dieback severity (2nd number)

- 0 no Eucalyptus present
- 1 no dieback
- 2 slight to moderate
- 3 moderate to severe
- 4 severe
- 5 very severe