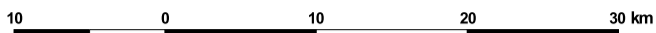




**MARY RIVER CATCHMENT
LOCAL GOVERNMENT
ESTIMATED POPULATIONS**



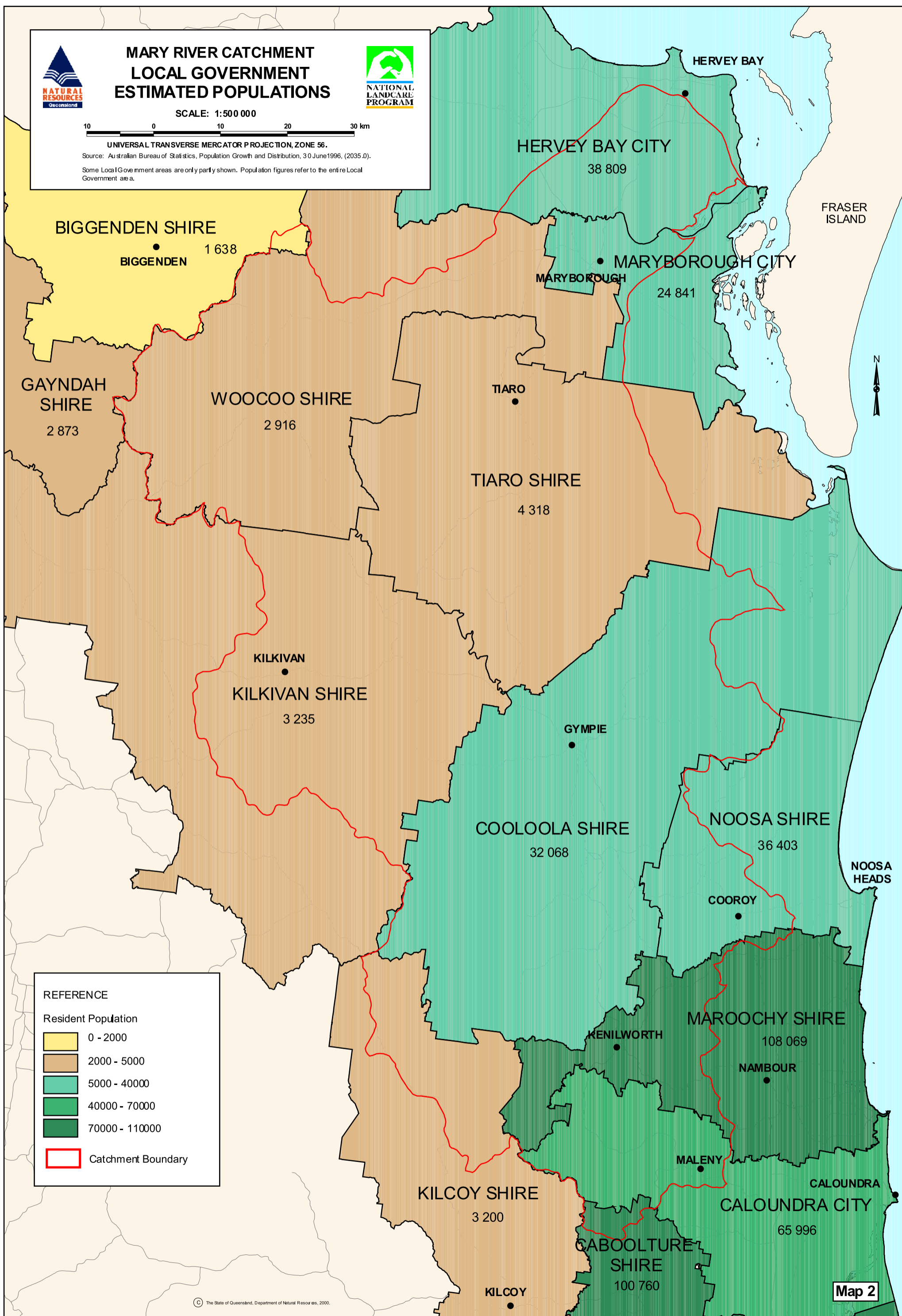
SCALE: 1:500 000



UNIVERSAL TRANSVERSE MERCATOR PROJECTION, ZONE 56.

Source: Australian Bureau of Statistics, Population Growth and Distribution, 30 June 1996, (2035.0).

Some Local Government areas are only partly shown. Population figures refer to the entire Local Government area.



REFERENCE

Resident Population

- 0 - 2000
- 2000 - 5000
- 5000 - 40000
- 40000 - 70000
- 70000 - 110000

Catchment Boundary