

2003

Friends of Kilcoy Creek Rivercare Project



The Friends of Kilcoy Creek Rivercare Group (formed in 2003) share the common goal of protection and rehabilitation of Kilcoy Creek and its riparian zone to provide a corridor from the Bellthorpe State Forest to the Mary River.

The Friends of Kilcoy Creek Rivercare Project resulted in approximately 89 hectares of riparian zone being protected by fencing, installation of 18 off-stream watering points and 5600 trees planted along Kilcoy Creek.



Policemans Spur Rivercare Group



Projects (2004):

- Tailors - Tree Planting
- Williams - Fencing
- Trstenjak - Fencing & Off Stream Watering
- Besford - Fencing
- Simpson - Off Stream Watering
- James - Fencing & Off Stream Watering
- PSRG Revegetation
- PSRG Weeding Kit



WEED CONTROL MANUAL



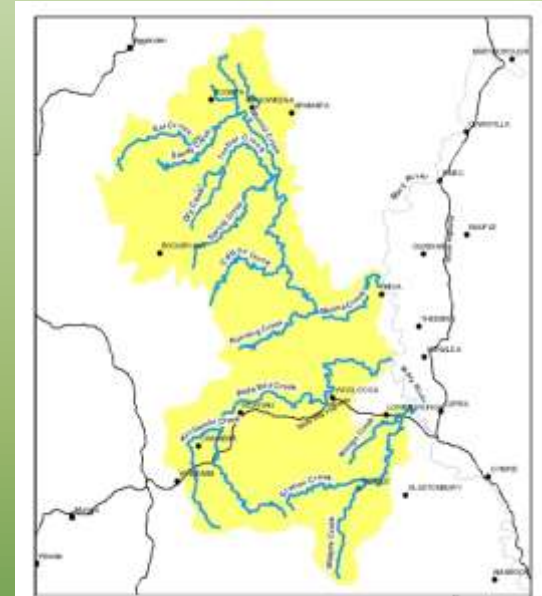
WONGA DROUGHT RECOVERY PROJECT

Helping Wonga District Landholders with Drought and Salinity Prevention



The Wonga Drought Management Project as focused on four main areas (2005):

- Irrigation Efficiency
- Water Use Management
- Water Quality Monitoring (Salinity)
- Riparian Management



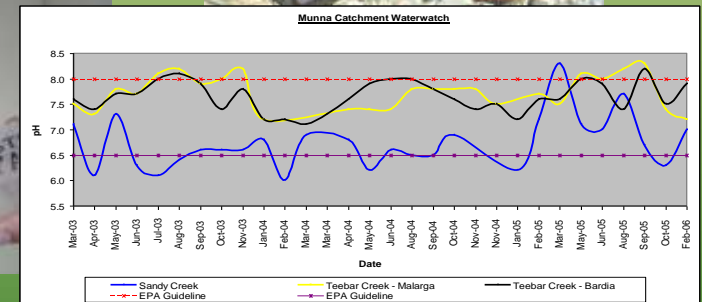
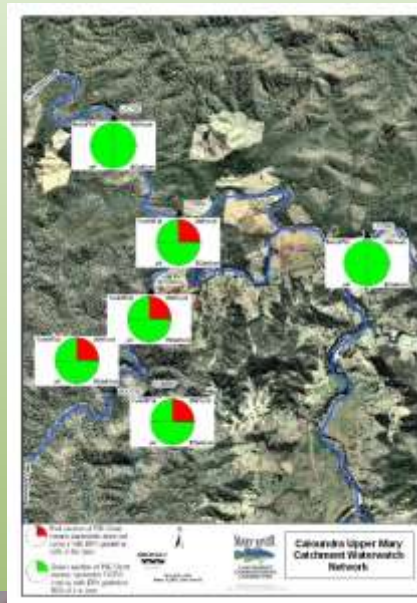


MRCCC Waterwatch Objectives:

- Monitor water quality for baseline and trend data in the Mary Catchment.
- Provide education and support for the community on water quality and catchment health .

MRCCC Waterwatch Services:

- Community water quality monitoring networks
- Education and awareness
- Training & Capacity Building
- Resource Library
- Storage of Water Quality Data
- Landholder services (water tests)
- Data sharing
- Support Rivercare Projects
- Advice and support for agency and local government



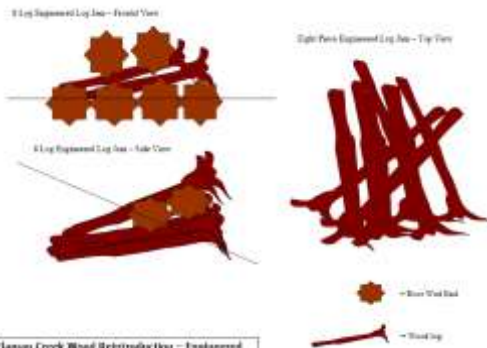
Hundreds of **volunteers** monitoring water quality since 2000.

Volunteers include graziers, dairy-farmers, small croppers, rural residential, urban dwellers, council employees and EPA staff. The Waterwatch networks rely on these community minded, environmentally conscious volunteers.

Large Woody Debris Projects (Wood Reintroduction)



- Protection of streambanks and the improvement of native freshwater fish habitat.
- Wood has become scarce within streams
- Wood is recognised for the crucial role it plays in aquatic life habitat and stream stability
- The MRCCC has undertaken six wood reintroduction projects in the Mary River Catchment
- These sites have utilised Engineered Log Jams (ELJ's), revetment logs and habitat logs.
- The projects have been very successful and stood the test of time.

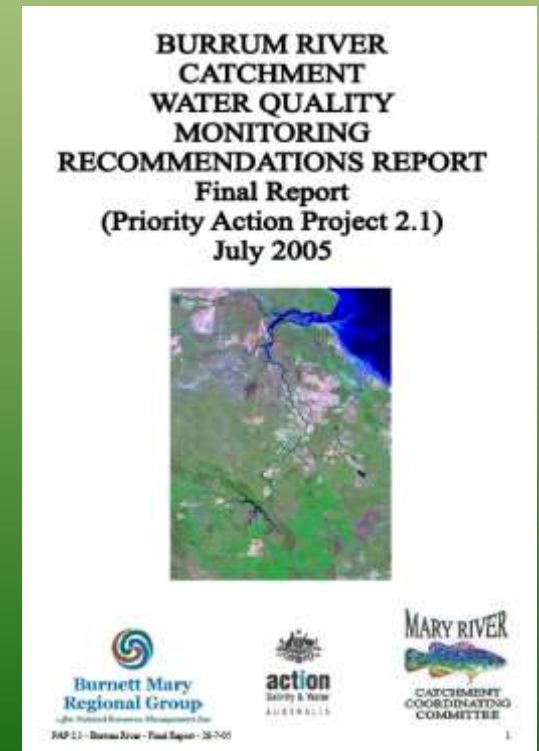
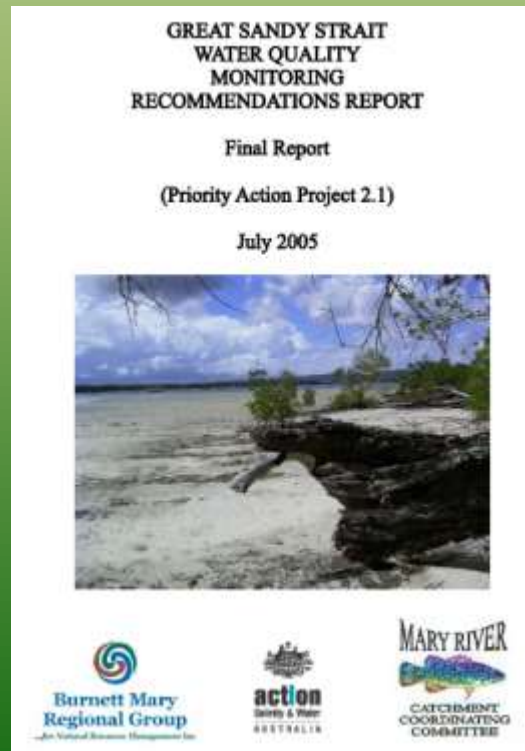
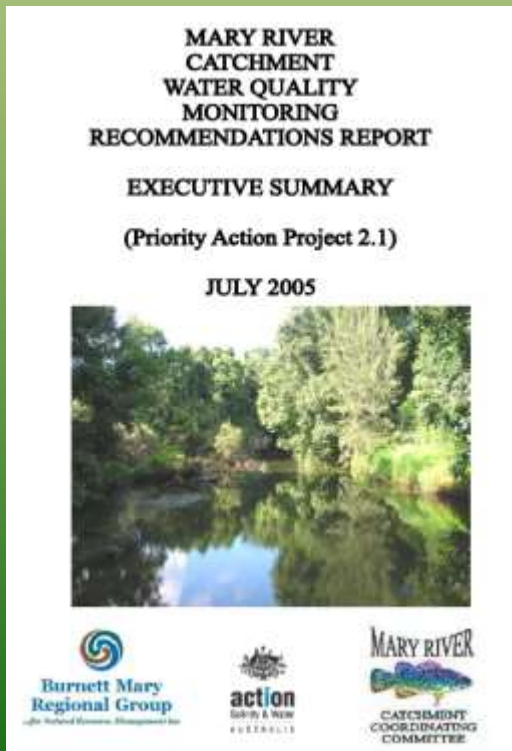


Hannu Creek Wood Reintroduction - Engineered Log Jam (ELJ) Configuration



Priority Action Plans - 2.1

- Recommendations for water quality monitoring in the Mary River catchment, Great Sandy Strait and Burrum River Catchment.
- Identify and describe the scope of current and historic water quality monitoring
- Recommendations on holistic Water Quality Monitoring Program:
 - Water Quality “*Report Card*” Program
 - Event Monitoring Program
 - Recreational Health Monitoring Program
 - Waterwatch Program





CARING
FOR
OUR
COUNTRY



On-ground rehabilitation, revegetation, weed management (2008-2009):

- 28 projects (\$153,000 allocated) and \$300,000 in-kind generated by landholders

Property planning (2009-2011):

- Soil Management Plans (50 landholders)
- Developing Property Pest Management Plans (80 landholders)



Skyring and Coles Creek Waterway Monitoring Program:

Monitor stream health parameters (water quality and aquatic ecology) of Coles and Skyring Creeks before, during and after construction of Section B - Bruce Highway upgrade (focus on stream diversions).

- Water quality
- Fish surveys
- Macroinvertebrate monitoring
- Frog monitoring
- Channel habitat monitoring



The secret lives of macroinvertebrates

Whirligig Beetles (Order: Coleoptera, Family: Gyrinidae):

- Eyes divided into dorsal and ventral portions (*they have four eyes!*)



Beetles with eyes in the back of their heads!

Dragon Fly and Damselfly Larvae (Order: Odonata):

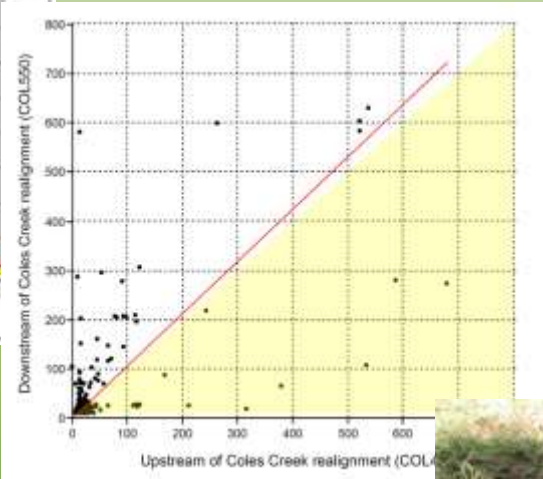
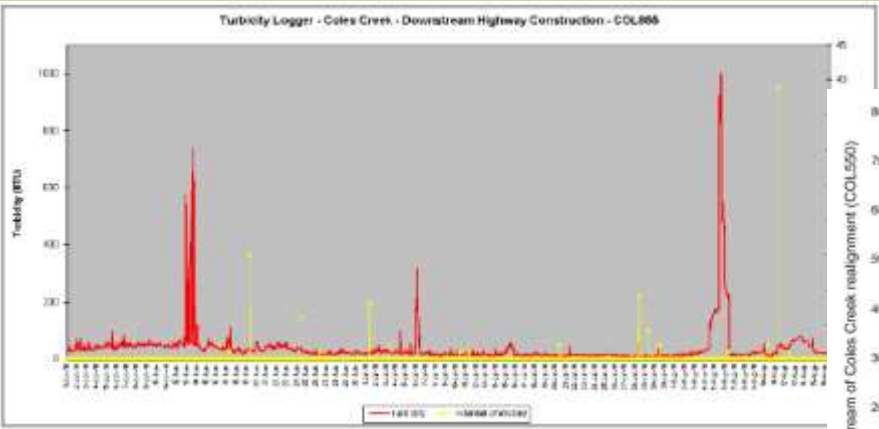
- Have a 'prementum':- stipital region of labium, containing muscles of palpi and ligular lobes, giving insertion to cranial muscles of the labium.
- *(In other words they have a mask! Used for catching prey).*



Predator!

Skyring, Coles Creek & Mary River Turbidity Logging Programs:

Monitor changes and trends in turbidity levels (NTU's) before, during and after construction of Section B - Cooroy to Curra Bruce Highway upgrade.



Mary Valley Link Road & Traveston Connection Road

Aquatic Health Monitoring Program:

Monitor aquatic health indicators of Mary River, Coles Creek and Traveston Creek before, during and after construction of Mary Valley Link and Traveston Connection roads, as part of EPBC requirements.

- Water quality
- ISC
- Macrophytes
- Channel habitat
- Turtle basking and nesting
- Macroinvertebrates
- Frog monitoring



Don't forget why we do what we do.....





My ten years of employment with the MRCCC have been filled with countless professional and personal highlights. The MRCCC has provided me with a highly rewarding and challenging career that I am infinitely grateful for.



**Most of all, I'm grateful for the INCREDIBLE people
I have been able to work with.....**



People who have helped me look at life and work from different angles.....



Fashion (*and safety*) conscious people.....



People with amazing catchment management knowledge...



People with an *intense* passion for what they do.....



The MRCCC and my colleagues have been a constant source of encouraging guidance, positive inspiration and practical support.

I have been truly blessed to be surrounded by these gifted and lovely people for the past ten years.



The knowledge and experience I have gained with the MRCCC will remain with me for a lifetime.

I wish to remain close to the MRCCC, and hope the future will provide many chances for us to continue to work (and socialise) together.

Keep up the
amazing
work!

