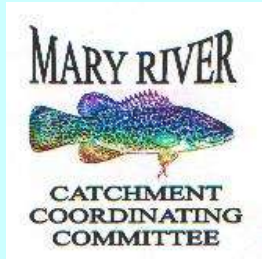
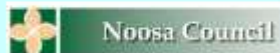


Winners of the 2004 National Rivercare Award

Mary River Catchment Coordinating Committee



2004 ANNUAL REPORT



MRCCC Delegates 2003

Interest Sector	Name
Beef/Grazing	Harry Jamieson
Dairying	Dave Burnett
Dept of Primary Industries	Graeme Elphinstone
Education	Mark Cridland
Environment	Roger Currie
Extractive Industries	Mollie Gilmour
Farm forestry	Ken Matthews
Fishing	Vince Collis
Gen Community Lower	Sue Chapman
General Community Upper	Dave Sands
Horticulture	Jim Buchanan
Landcare, Lower Mary	Paul Marshall
Landcare, Upper Mary	Robert Bell
Local Government Lower	Jenny Burton
Local Government Middle	Shane Jocumsen
Local Govt upper	Ray Kelly
Special Member	Nai Nai Bird
Special Member	Margaret Thompson
State Development	Bridget Edwards
Sugar	Frank Sestak
Vacant Sectors	
Irrigation	Vacant

Front cover photographs from top:

Clockwise from top: Paul Marshall, Graeme Elphinstone, Harry Jamieson and Margaret Thompson with the National Rivercare Award on the steps of Parliament House, Canberra

Giant Barred Frog found on a survey along Six Mile Creek

Dale Watson & Eva Ford, Catchment Crawl October 2003

L to R: Brad Wedlock, James Blundell & Bundaberg Rum Managing Director Tony Scanlon at the launch of the Bundaberg Rum Bush Fund, Country Music Muster, Amamoor, 2003

Eva Ford and Deb Seal with Gympie Central State School students following the "Turn off the Tap" assembly presentation. (Photograph courtesy of the Gympie Times)

2003-2004 MRCCC Office Bearers

Chair	Harry Jamieson	<i>Beef/Grazing Sector</i>
Vice Chair	Paul Marshall	<i>Lower Mary Landcare</i>
Secretary	Margaret Thompson	<i>Special Member</i>
Treasurer	Sue Chapman	<i>General Community (Lower)</i>

MRCCC Staff

Operations Manager	Brad Wedlock
Catchment Officer	Dale Watson
Catchment Officer	Eva Ford
Lower Mary Waterwatch Coordinator	Lee Field
Administrator	Debbie Seal
Administrative Assistance	Yvonne Richardson
Project Support Officers	Simone Bignold
	Lisa Skrokov

Mary River Catchment Coordinating Committee
 Mary Catchment Resource Centre, 53 Tozer St, (PO Box 1027), Gympie 4570
 Phone: 07 5482 4766 Fax: 07 5482 5642 Email: mrccc@qldwide.net.au
www.wb2020.qld.gov.au/icm/mrccc

Mary River Catchment Coordinating Committee
Minutes of 2003 Annual General Meeting

Monday, 15 September 2003

Tiaro Hall, Mayne Street, Tiaro

Attendance:

<u>NAME</u>	<u>SECTOR/ORGANISATION</u>
Harry Jamieson	Beef and Grazing Industry
Ray Kelly	Noosa Shire Council
Margaret Thompson	Secretary /Special Member
David Sands	General Community Upper Mary
Ken Mathews	Private Forestry South Qld
Gordon Banks	Cooloola Forest Growers Coop
Bridget Edwards	State Development
David Field	Environment EPA/QNWS
Stephen Barry	Environment Protection Agency
John Horrex	Lower Mary local government
Paul Marshall	Gympie & District Landcare Lower Mary
Graeme Elphinstone	Department of Primary Industry
Marilyn Connell	Greening Australia
Lyn & Ray Klupfel	Tiaro Landcare
Trevor Stillman	BMRG
David Burnett	Dairy
Phillip Moran	MRCCC (LMCCC)
Conor Neville	MRCCC (LMCCC)
Allan Brown	Mayor, Maryborough City Council
Cr Julie Walker	Cooloola Shire Council
Cr Sue Chapman	Tiaro Shire Council/Treasurer
Eva Ford	MRCCC
Deb Seal	MRCCC
Brad Wedlock	MRCCC
Dale Watson	MRCCC

1. Welcome:

Chair Harry Jamieson welcomed members, delegates and visitors to the Annual General Meeting of the Mary River Catchment Coordinating Committee and declared the meeting open.

Apologies:

Bruce Lawton, Cate Molloy MLA, Carolyn Male MLA, Mayor Don Aldous, Mayor Joy Leishman, Mayor Mick Venardos, Stacey Brown, Mark Cridland, Mike Askham, Lin Fairlie, Harry Bonanno, Mollie Gilmore, Vince Collis, & Lee Field.

Moved Julie Walker, Seconded David Sands that apologies be accepted. Carried.

The Chair then extended an invitation to John Horrex, Mayor Tiaro Shire to welcome visitors to the Shire. John gave a brief history on the Shire mentioning the contribution groups such as Greening Australia and Tiaro Landcare Group make to the health of the catchment. The Chair also welcomed the Mayor of Maryborough City Council, one of the original selection panel for delegates to the MRCCC.

2. Chairman's Report 2003:

Highlights

1. Funding difficulties
2. Working together with Local Government
3. Landcare Forums
4. Meeting with Federal Minister Warren Truss
5. Success in State Landcare Awards Rivercare Project generated 900,000.00 of Riparian Restoration Works.
6. Waterwatch 2003 - 50 Volunteers monitor 100 sites monthly. Thanks to all staff.
7. Cabomba Project with Lake MacDonald Including Cabomba Bio Control with CSIRO and Environment Australia.
8. Deep appreciation of Dairy Farmers Cooperative as a major sponsor of the group in providing valuable office space without which we could not continue.

David Burnett commented on the report. He paid tribute to the staff and congratulated everyone who has played a role.

Julie Walker spoke on behalf of the Cooloola Shire Council of the work that has been accomplished over the year. The river as main artery of the catchment binds us all.

Graeme Elphinstone also spoke glowingly of combination of Gympie & District Landcare and MRCCC in combining to stage the Landcare conference in August. This is true example of what can be achieved when a catchment works together.

Chair Harry Jamieson moved the adoption of his report. Seconded Stephen Barry (EPA), Carried.

3. Treasurer's Report:

Current Total Assets \$409,547.85

Total Equity \$401,512.51

The adoption of the Treasurer's report was moved by Sue Chapman. Seconded Steve Barry. Carried.

Questions -

Difference in expenses is due to more Projects for 2003 as against 2002.

Question asked about accrual accounting procedures and the explanations were satisfactorily provided.

4. Other Reports:

4.1 Dale Watson

Monitoring and Evaluation Report of the Riverbank Stabilization Project. Friends of Kilcoy Creek Rivercare Project. Rivercare Work and Catchment Health Issues need to be included in Property Management Plans and EMS.

Waterwatch – reliance on landholders to monitor and test the water quality. This involvement often leads to greater involvement in Catchment Health.

Dale also spoke of the value of accessing land holders knowledge of Historical event and issues throughout the area. Need for ongoing commitment from MRCCC and land holders working in cooperation.

4.2 Eva Ford

Threatened Species Frog Project. Eva spoke of the decline of frogs

Southern Gastric breeding frog and Southern Day Frog has not been seen since 1979. Five other species in SEQ have declined considerably including giant barred frog.

These inhabit the Kenilworth area and are the target for our rehabilitation efforts. Eva gave a comprehensive report on the decline of frog population world wide. She also delivered some hints on not spreading the chytrid fungus.

David Burnett suggestion labelling frog friendly Herbicides.

4.3 Phil Moran and Conor Neville

Presented a report on the Cabomba Project of Lake MacDonald.

Phil Moran spoke positively about the aquatic revegetation project for the Lake. He also covered the spread of Cabomba in impoundments in everywhere in Australia. The spread occurred in the last ten years.

Conor Neville spoke of the endeavour of combined groups to seek a Biological Central

Agent. There is a large contribution coming from Local Government as well as Environment Australia and CSIRO.

4.4 In stream works by Brad Wedlock

Covered Large Woody Debris Project

Sediment Model

Riverbank Erosion 87%

Sheet Erosion 8%

95% of sediment is washed out at River Heads. The Mary does not store sediment on the Flood Plains. Brad then showed a number of options for Riverbank stabilization which we are keen to use in the trials in the Mary and its tributaries.

4.5 Lee Field

Maryborough & District Waterwatch Network.

Brad delivered the Maryborough Waterwatch Network Report on behalf of Lee Field this funding comes from Maryborough City Council.

The Maryborough and District Waterwatch Network started after a visit to Maryborough from Brad Wedlock and Phil Berrill around March of this year. A small band of interested local community people were trained in the art of testing fresh water in and around the Maryborough District. Waterwatchers were shown how to take the basic test of ph, temperature, salinity (EC), dissolved oxygen and turbidity as well as assess the areas that they would be testing.

In May, six Waterwatchers began testing seven sites around the Maryborough district. A roster system was devised to allow the equipment to be passed around the network with minimal effort. Tony and Sue Wedlock play an integral role in the smooth operation of the network by allowing the equipment to be picked up and dropped off at their shop in Kent Street. The network is now in its second three-month roster with a total of 11 people contributing to the network and 24 sites being tested every month. The sites are a mixture of urban and rural sites with the majority of them being located on public land.

Lee conveyed her thanks to MRCCC.

- The MRCCC team in Gympie, especially Brad Wedlock and Deb Seal for their support;
- The Maryborough City Council for their financial support towards the network;
- Tony and Sue Wedlock for the vital role they play in maintaining the network;
- All the dedicated Waterwatchers who give up their time once a month to contribute to the network.

4.6 Trevor Stillman Report from the BMRG for NRM

Comments for MRCCC

1. Executive Officer - Dr Deborah Scott has been appointed today. She has a very strong background in geology and has worked in the USA, Africa and Australia. Anne Goeths will remain in the Bundaberg office until 19 September.
2. NAP State level activities -State Investment Projects (SIP's) – Updates being provided by NR&M (contact Christina.Dwyer@nrm.qld.gov.au)

3. Key points for Water Quality SIP's :
 - Ministers from NR&M and EPA signed the MOU for delivery of NAP Water Quality Program (WQ01 – WQ06) in July 2003.
 - Initial payments released to EPA in August total \$1.17m (Total project budget of \$6.08m). This will be underspent to the end of December due to delays in finalising MOU, staffing etc.
 - The EPA & NR&M are currently recruiting staff for NAP funded positions. Mid-November to end December before positions are all filled hopefully!!!!
 - Some progress to date includes:- (WQ01) CSIRO Land & Water undertaking Stage 1 of the Review of regional monitoring needs, (WQ02) Pilot metadata collation in the Burnett-Mary largely completed, (WQ03 GB Reef modelling report drafted, (WQ04) Draft SoR review completed by Qld Herbarium, (WQ05 & WQ06) staff have to be appointed.

Funding for water quality SIPS has been extremely slow in coming forward.

4. Facilitator/Coordinator position – shared coordinator position offered and accepted, Communications Officer position offered and accepted, Coastcare Officer and biodiversity Officer positions offered, two Community Support Officer positions offered. EOIs for Housing and services for these positions being negotiated.
5. State of the Region Report – recommendation from TAG meeting for offer of contact (with second choice) to be considered by BMRG on 18 September.
6. Preparation of the NRM Plan and Regional Investment Strategy _ Draft Work Program for 2003-2004 has been prepared and is underway.
7. NHT2 Foundation Funding bid has been presented. Additional NAP Foundation Funding negotiations are continuing.
8. NAP Priority Funding Proposals – all but two(2) PFP's have been approved by Ministers (9PFP's with a budget of \$1.74m). The unfunded PFP's will be reworked and resubmitted within the next two months.
9. BMRG rollover process and NHT2 designation are being considered by number of sub-committees. As part of that process the BMRG needs to engage all community groups. A number of initial questions are presented below for your consideration and feedback.

QUESTIONS TO CONSIDER IN RELATION TO THE ROLLOVER PROCESS

1. Should the present structure of 3 community, 3 industry, and 3 local government, with an independent chair (as decided by the three meetings held across the region in 2001) be maintained? If not, what should be the structure of the Regional Group. A factor to consider here is that with NHT2 the C'wealth/State require representation from Coastcare and the Indigenous community. This will mean at least two extra members being added to the Regional Group.
2. Present members have been in position for nearly two years (as decided at the three regional meetings). Is this term suitable or should it be longer or shorter?
3. If two years is a suitable term, should the whole nine (9) members be replaced at one time, or should it be 'staggered' process?
4. What other suggestions do you have in relation to the rollover process?
5. Should there be an independent chair with no voting rights, or should the chair be a board member with voting rights?

Please note that these are only my initial thoughts on the rollover process. With some good feedback and some more time to consider the process, I hope to be able to expand on these questions and present the BMRG with a more comprehensive outline of what the catchment community requires. If you could provide me with specific responses to Q1 – 5 as you can I would really appreciate it.

5. Election of Sector Representatives 2003:

List of Nominations:

Name	Nominating Organisation	Nomination rec'd	Proxy	Rec'd
Beef and Grazing Industry	Gympie District Beef Liaison Group	Harry Jamieson	Hugh Viner	12/9
Dairy		David Burnett (pending)		
DPI	Craig Mathieson	Graeme Elphinstone	TBA	
Education	Education Queensland South Burnett District Office	Mark Cridland	Stacey Brown	8-Sep-03
Environment Groups	Wide Bay Burnett Conservation Council	Roger Currie		Confirmed
EPA	Environment Protection Agency	No Nomination received		
Extractive Industries	The Mary River Extractive Group	Mollie Gilmour		
Fishing		Vince Collis		
Forestry	Cooloola Forest Growers	Ken Matthews	Gordon Banks	12Sep03
General Community Lower	Ron Black, MR Riparian Landholders	Sue Chapman		
General Community Upper	Save the Upper Mary Assoc	Dave Sands		
Horticulture	Cooloola Fruit & Vegetable Assoc Inc	Jim Buchanan	David Frits	8-Sep-03
Landcare Lower Mary	Tiaro Landcare	Paul Marshall	Lyn Klupfel	8-Sep-03
Landcare Upper Mary	Noosa Landcare	Mike Askham	Lin Fairlie	8-Sep-03
Local Government Lower	Wide Bay Local Govt Assoc	No nomination received		
Local Government Middle	Cooloola Shire Council	Julie Walker		
Local Government Upper	Noosa/Maroochy/Caloundra Shires	Ray Kelly	Pauline Clayton/Bruce Dunne	2-Sep-03
Natural Resources & Mines		No Nomination received		
Special Member	Margaret Thompson	Nai Nai Bird		4-Sep-03
Special Member	Harry Jamieson	Margaret Thompson		4-Sep-03
State Development	Dept of State Development	Bridget Edwards		8-Sep-03
Sugar	Maryborough Cane Protection and Productivity Board	Frank Sestak	Trevor Turner	9-Sep-03

Moved Julie Walker, Seconded John Horrex that all confirmed nominations be endorsed.

The EPA had declined to accept a position on the MRCCC. They will however be providing technical support to the Regional Body. This is a State wide policy. DNR yet to decide on Policy.

5.2 Election of Office Bearers 2003:

The Chair was handed over to Allan Brown, Mayor of Maryborough City Council. Allan was a member of the original Mary River Catchment Coordinating Committee over many years. Allan remains supportive of the work the MRCCC is doing and will continue to do so. Allan then called for nominations for the position of Chair. Nomination received in writing.

Chairman

Harry Jamieson nominated by Margaret Thompson. Seconded Sue Chapman.

Harry Jamieson duly elected unopposed.

Deputy Chair

As no written nomination was received, nominations were called from the floor.

Paul Marshall was nominated by Sue Chapman. Seconded Harry Jamieson.

Secretary

Margaret Thompson nominated by Sue Chapman. Seconded Harry Jamieson

Margaret Thompson was duly elected.

Treasurer

Sue Chapman nominated by Harry Jamieson. Seconded Margaret Thompson

Sue Chapman was duly elected.

These concluded the election of the executive.

6. Presentation by Brian Stockwell: On his Churchill Fellowship "Rivers Reborn"

It covered the great deal of effort being invested in restoring the Rivers of Europe.

Key Differences, Use Values, Flood Mitigation

Innovative Fund Managers use this as leverage from Environmental Outcomes.

West Country River Trust advice on Resource Management Plans.

Wetlands Ecosystem Research and of London Private Enterprise Sponsorship.

Success Factors - Catchment scale based approach. Adoption of voluntary approach not regulations

A practical approach, one to one advice

Mersey Basin

Highlights the "Quality of Place" plays an important role. Green Badge. Highly Prize Awards

They work on regeneration of their community to counteract Environmental Program

D River Consortium

Success Factors - Community Driven, Goal Driven, Ideas Sales Person, Enthusiasm,

Successful Partnership - Enthusiasm Commitment and Vision, Rain and Water Quality, Driven water quality

Huge Chemical Spill - Crises drove Political Commitment. 85-96 Reduced Phosphate by 65%

Reduction of Nitrogen is much slower as is metals as they continue to pulse through the system

Success Factors - Political will commitment to whole of Catchment approach. Sustainable Development

Precaution and Prevention, Open Planning Process

7. Appointment of Auditor:

Moved John Horrex, Seconded Graeme Elphinstone that the appointment of auditor be held over until General Meeting in October 2003 after quotes have been obtained.

8. Confirmation of Minutes of Previous AGM:

Moved John Horrex, Seconded Dave Sands, Carried.

AGM Closed 12.45 pm

MRCCC Chairman's Report 2004

Harry Jamieson

As mentioned in last years report, the MRCCC were successful in winning two Queensland awards, the Landcare Catchment Award and the Rivercare Award, at the State Landcare Awards held in August 2003. The MRCCC were then Queensland finalists in these categories at the National Landcare Awards held in Canberra on the 1st September 2004.

Winning two State Awards entitled four MRCCC representatives to an all expenses paid trip to the National Capital. We were required to deliver a presentation of our achievements at a gathering of State and Territory finalists during the afternoon prior to the awards ceremony dinner at night.

This was a most interesting session. We were made aware of environmental problems and solutions in other states and territories, from the vast plains of the Barkly Tableland in N.T. to the polluted lower Vasse River at Busselton in south-west Western Australia where people can no longer enjoy swimming, fishing or boating.

Many years of dedicated effort by the staff and committee members, past and present, resulted in the MRCCC being named the National Winner of the prestigious Murray Darling Basin Rivercare Award at the National Awards that evening. This was a tremendous result for our organisation. I can inform you all that Paul Marshall, Graeme Elphinstone, Margaret Thompson and I, as your representatives, accepted the award before 500 guests with a great sense of pride and achievement and needless to say, we were greatly delighted.

Our campaign to initiate a closer dialogue with Councils in the catchment was undertaken and judged a success by participating Executive Members and staff. It is an activity that will be ongoing and I hope that we can arrange to meet with Councillors and staff once a year. This will allow us to have an interchange of ideas and to inform them of progress and achievements we have made since last meeting.

We met with Maroochy, Cooloola, Kilkivan, Tiaro, Maryborough and Kilcoy Councils. We thank them for their ongoing support and special mention must be made of the considerable financial support from Maroochy in particular, as well as Cooloola, Caloundra, Maryborough and Noosa Councils. Maroochy Shire Council are proactively working with community groups to develop and implement a waterways plan for their Shire. I congratulate their initiative to strategically tackle the issues of water quality in their Shire.

It was heartening to be selected by Bundaberg Rum to assist them with their new Landcare initiative – the Bundaberg Rum Bush Fund – in 2003. Bundaberg Rum approached the MRCCC, through Landcare Australia, to undertake a major project on their behalf. The Queensland launch of the Bundaberg Rum Bush Fund project took place at the 2003 Country Music Muster at Amamoor, organised by the MRCCC, and MC'ed by Graeme Elphinstone. Tony Scanlon (Managing Director of Bundaberg Rum) and James Blundell were suitably impressed.

The Burnett Mary Regional Group (BMRG) is now in its third year of operation, with a relatively new board of management. There is a sense of cautious optimism within the wider community that genuine cooperation and consultation will now occur. Contracts have been signed and finance is finally reaching some of the groups who are the backbone of the natural resource management movement. Without these groups e.g Landcare, Coastcare, Catchment Groups, whose members are largely volunteers, very little on-ground work would take place.

Government and regional bureaucracies would do well to realise that justification for their existence depends on mostly unpaid workers, who are truly environmentalists. The MRCCC signed a contract in August with the BMRG to deliver information relating to the Water Quality Priority Action Proposals (PAPs) 2.1 and 2.2.

Attendance at our regular meetings remains unsatisfactory. There is no doubt that too much of our time and efforts during the past year has revolved around ongoing disputes with the BMRG. Fruitful discussions at meetings regarding our core activities has often been curtailed in order to explain to members the problems encountered with the tendering process for PAPs, decisions of the Board and staff behaviour etc.

These disputes are now behind us. We cannot afford to be distracted from our core activities. We will deal with organisations such as the BMRG to achieve environmental outcomes as equal partners, not in any subservient way. After 11 years of operation, the MRCCC has accumulated the knowledge, acquired the experience and dedicated staff to be the repository of most available knowledge regarding ICM in the Mary Catchment. In fact, preparations are now underway for the MRCCC's 100th General Meeting, which will be the first meeting in 2005.

Because some sector representatives are not attending meetings, it is time to consider a restructure of the committee. Composition of the committee needs urgent review. Our Constitution allows for the appointment of special members with skills to enhance committee deliberations. This is one avenue to be explored and will be one of the first business items to be discussed and debated at the earliest opportunity. Your Executive has had discussions with the staff. Where possible, increased remuneration has been negotiated with increased responsibility.

Brad Wedlock is now Operations Manager with overall responsibility for:

- ensuring that projects are conducted effectively and on time
- liaising with Councils, Regional Groups and Landcare Groups
- ensuring that all avenues for additional funding are explored

Dale Watson is one of our Catchment Officers with responsibility for:

- projects associated with the catchment and sub-catchments
- coordinating Waterwatch networks throughout the catchment and sub-catchments
- large Woody Debris reinstatement programs
- assisting Brad as required

Eva Ford is our other Catchment Officer responsible for the Living with Threatened Species project. Eva's work with endangered species is receiving a lot of attention. Eva is currently preparing to host a Frog Forum in November, which has already generated considerable interest. Eva also plays a principal role in the Cooloola Shire Primary Schools' Assembly presentation, educating kids to "turn off the tap" and conserve our precious water supplies.

Lee Field is our Maryborough Waterwatch Coordinator, working with Waterwatch volunteers and school groups in the lower Mary.

Deb Seal is our Administrator, responsible for office administration, record keeping, financial returns, and also assisting Eva conducting the schools' presentations, which are funded by Cooloola Shire Council.

Two Lake Macdonald Catchment Care Group projects were successfully wound up this year. The Cabomba Re-use Project and the Cabomba Mapping Project both produced useful outcomes that assist us to understand this aquatic weed, Cabomba. Our thanks to Conor Neville and Phil Moran for undertaking these projects. The Cabomba Bio-Control Project involves research in Argentina into a potential bio-control agent to tackle the Cabomba weed. This project is supported by the CSIRO, Alan Fletcher Research Station, and local government and water boards from Taree to Townsville. MRCCC through the Lake Macdonald Catchment Care Group (LMCCG) will be assisting CSIRO this year with cabomba experiments. LMCCG also assisted NR&M with control trials on Hygrophila – a semi-aquatic plant invading Lake Macdonald's perimeter.

All staff and delegates regularly participate in educational activities involving schools throughout the catchment, as well as attending field days and country shows including the Noosa, Gympie and Maleny Show, the Chainsaw Expo, the Tiaro Fishing Competition and the Country Music Muster at Amamoor.

Both Brad Wedlock and Dale Watson have also undertaken further training to augment their expertise and knowledge by attending Griffith University's Stream Hydraulics Course earlier this year and I thank John Amprimo from DNRM for his contribution to their costs. Brad will also be attending the 4th Australian Stream Management Conference in Tasmania later this year as well as the Riverstyles Course in southern New South Wales in November.

The Codline newsletter continues to play an important role in disseminating information about our organisation and also allows other groups and individuals to inform readers about interesting and important activities throughout the catchment. Our thanks to Eve Witney for keeping over 1000 catchment residents up to date with educational and entertaining reading.

I would like to pay tribute to our staff for their ongoing commitment to this organisation. They have performed with dedication during a difficult period.

During 2004, the MRCCC facilitated the following forums and meetings:

Wed 22 Oct 2003 - Salinity Hazard Mapping Seminar

Wed 11 Aug 2004 – Burnett-Mary NRM Plan Forum

Mon 17 May 2004 – Mary Catchment Landcare Forum

Members of our Executive and Staff have also participated in a number of meetings involving the determination of environmental values for the Mary Basin Water Resource Plan.

Once again, we are greatly appreciative of the support of Dairy Farmers, who provide office space for our staff and areas suitable for Executive and other meetings.

Thank you also to Paul Marshall for his invaluable advice and sensible contributions to discussions at meetings with BMRG and others.

I also congratulate Margaret Thompson on a job well done as Secretary. Being a Board Member of the BMRG has placed added pressures on Margaret's time, which must be a scarce commodity in the Thompson household.

Thank you also to Sue Chapman who has decided to stand-down from her position as Treasurer after 2 years in the job. We wish you luck with your new position as Events Coordinator with Cooloola Shire Council. Hopefully we will be working with you in the future.

I look forward to working with you all over the coming year, and thank each and every one of you for your support and enthusiasm for catchment management in the Mary.

Implementing the Mary River & tributaries Rehabilitation Plan

National Rivercare Award

Brad Wedlock & Deb Seal

The MRCCC won the National Rivercare Award in September 2004, qualifying initially as the Queensland Award Winner in the same category at the Queensland Landcare Awards in 2003. The award recognises the significant achievements generated by the implementation of the Mary River & tributaries Rehabilitation Plan (MRCCC 2000), which continues to provide a prioritised framework for riparian restoration.

In recent years the focus of riparian rehabilitation has been based on a sub-catchment basis. This has facilitated the formation of neighbourhood landholder groups such as the Kenilworth Croakers, Friends of Kilcoy Creek, Wonga Drought Recovery Project, Policeman's Spur Rivercare Group and the seven Waterwatch Community Networks. Partnerships with councils have also been a key to this award, particularly Maroochy, Cooloola, Noosa, Caloundra and Maryborough.

Significance: The national award is the culmination of the past 4 years of implementing the Mary River & tributaries Rehabilitation Plan prepared by Brian Stockwell in consultation with the MRCCC in 2000.

Wonga Drought Recovery Project

Dale Watson

The Wonga Drought Recovery Project was developed to raise awareness and educate landholders on the issues of water-use efficiency and streambank management in the Widgee-Wonga district (Kilkivan Shire). The drought that affected much of Queensland over the past three years has highlighted many water use issues in rural Queensland. During the drought, as well as irrigation and stock water becoming scarce, many noticed the water becoming more saline. Rising salt levels place much stress on irrigation, stock and domestic water use, as well aquatic life within streams. Water use efficiency and riparian management can help alleviate some of the affects of drought and salinised water. The actions of the project will help prepare the Widgee-Wonga district for future droughts and salinity problems. The project has three main components outlined below:

Water Use Efficiency:

George Russell, Growcom's (formerly QFVG) Water For Profit Project Officer, has undertaken a systems check of the irrigation system of a large Macadamia property in the Wonga area. The systems check involved pressure tests, water distribution measurements, irrigation depths, pump efficiency, filtration effectiveness and other checks. A field day is planned for October on the property with most of the local horticulture growers (and other irrigators) expected to attend and learn what is involved in a systems check; what has been learnt from the systems check undertaken on the property and how to use the results of a systems check to manage their irrigation systems more effectively to benefit both the environment and their own yields. The funding acquired from the Australian Government Envirofund grant will be spent on a

combination of financial assistance to landholders for improvement of irrigation systems water efficiency as well as the purchase of soil moisture monitoring equipment.

Rivercare:

- Riparian fencing has been undertaken along Widgee Creek by a committed landholder. The Wonga Drought Recovery Project has supplied the material costs for this fencing and the provision of funds for installation of off stream watering points.
- Kilkivan Shire Council has given permission to undertake a Cats Claw eradication program in the council reserve behind Widgee Creek State School. The program will involve a Weed Education Field Day and ongoing maintenance of the site by Widgee State School students and teachers.

Water Quality Monitoring:

The Widgee Wonga Salinity Catchment Crawl was held in May 2004. Ten sites were monitored along Widgee and Wonga Creeks to gain a 'snapshot' of the water quality of this sub-catchment. Seven property owners were involved, along with the Widgee State School. Some interesting results were recorded and reported on in the Widgee Wonga Salinity Catchment Crawl Report, which was distributed among the community. This project will lead to the formation of a Waterwatch Network in the District.



L to R: Lisa Skrokov, Dale Watson and Wonga volunteer Ted Tame waterwatching on Widgee Creek

A three-part interview has been aired on ABC Radio outlining these components of the project. The Wonga Drought Recovery Project is already proving a success with much awareness being raised in the district on the issues of riparian management, salinity, water quality and irrigation water use efficiency.

Significance: Strong industry links have been developed with Growcom and much interest has been generated in an area of the Mary River Catchment that usually receives little attention.

Wonga drought Recovery Project Implementation Partners	Growcom (Qld Fruit & Vegetable Growers)
	Widgee State School
Supported by	Australian Government Envirofund

Friends of Kilcoy Creek

Dale Watson & Scott Woolbank

The Friends of Kilcoy Creek Rivercare Project has been an extremely successful example of landholders working together to successfully rehabilitate and protect their riparian zones. Scott Woolbank, a property owner on Kilcoy Creek, deserves much credit for getting the project on the ground and for being the driving force in the district. The project involved 10 major landholders along Kilcoy Creek in the Conondale Ranges and has resulted in approximately 89 hectares of riparian land protected by fencing, the installation of 18 off-stream watering points, and 5600 trees planted along Kilcoy Creek.

The project has attracted much attention and media coverage. The final report outlining the achievements of the Friends of Kilcoy Creek Rivercare Group was released in March this year, with a total of over \$84,000 of riparian rehabilitation generated through this project. Landholder in-kind contributions constituted 59% of this project's funding, with MRCCC providing 25%, Envirofund 9%, Caloundra City Council 4% and the Bundaberg Rum Bush Fund 3%.

Significance: All landholders along Kilcoy creek are involved in the project. The success of the project has generated much enthusiasm in the wider community and led to further projects in the district. The modest incentives provided to landholders are greatly appreciated, and lead to fantastic outcomes.

Policeman’s Spur Rivercare Group

Dale Watson

As a result of the enthusiasm in the Upper Mary River Catchment generated by MRCCC’s Rivercare projects, the Policeman’s Spur Rivercare Group (PSRG) was formed in late 2003. Di Collier, PSRG’s Volunteer Coordinator, is the backbone of the group and has spent much of her own time organising and assisting in the group’s activities. PSRG is another example of a dedicated group of volunteers committed to the rehabilitation and protection of the riparian zones of the Mary River headwaters. The first meeting of the group attracted over 20 participants. After successfully applying for funding from the Australian Governments Envirofund and the Caloundra City Council, the Policeman’s Spur Rivercare Group has so far undertaken the following activities:

- Tree Planting at the junction of Geraghty Creek and Mary River. 6000 locally native trees planted with recyclable tree guards, mulched and watered.
- Weed Information Day. Caloundra City Council’s Pest Control Officer (Greg Brown) discussed weed identification and control methods at three sites along Policeman’s Spur Road, followed by a BBQ and discussion.
- Tree Identification Day. Barung Landcare’s Marc Russell discussed native plant identification methods and examples with the group along Policeman’s Spur Road, followed by a BBQ lunch.
- The group has been working with the Caloundra City Councils on ground weeding team. This has resulted in the council team being trained in environmentally sustainable weed control methods.
- Policeman’s Spur Rivercare Group Weeding Kit and Weed Control Manual. Transportable kit of manual weed control tools that is passed among the group members, along with the weed control manual that contains information on identification and control methods for weeds of the local area.
- Three newsletters have so far been circulated among members outlining the group’s results and future activities.

The Policeman’s Spur Rivercare Group is planning on undertaking the following activities in the near future:

- Several more tree plantings to extend the riparian zone along Geraghty Creek.
- Set up of a Policeman’s Spur Weeding Team, who will rotate between sites requiring manual weed control on a monthly basis.
- Undertake a Turbidity Event Monitoring Program, in order to investigate the possible sources of excessive sediment observed by group members in times of rainfall.
- Formation of a local Native Tree Bank.

Policeman’s Spur Rivercare Group Implementation Partners	Policeman’s Spur Rivercare Group
	Friends of Kilcoy Creek
	Barung Landcare
Supported by	Australian Government Envirofund
	Bundaberg Rum Bush Fund
	Caloundra City Council

Significance: This project has proactively initiated partnerships between local government and the community which has resulted in outstanding on-ground outcomes for the benefit of catchment management.

Lower Six Mile Creek Mary River Cod Enhancement Project

Brad Wedlock & Paul Marshall (Gympie & District Landcare Group)

The final phase of the Lower Six Mile Creek Mary River Cod enhancement project funded by the MRCCC took place during the 2003-04 financial year. MRCCC was approached by Gympie & District Landcare Group to partner them in this strategic project in 2002. This project took place at the Main Roads Six Mile Rest Area and the adjoining property owner on the creekbanks of the Six Mile Creek near the junction with the Mary River, and involved the establishment of over 16,000 native riparian seedlings. A Green Corps Team worked on this site for 2 years. Future phases of this project are currently being developed.

Significance: The Six Mile Creek system is recognised for its importance as Mary River Cod habitat. This site is no different, with all the preferred habitat requirements of the Cod. During the Mary River Cod radio-tracking program, one of the tagged Mary River Cod took residence in a snag at the site for over one year. The site, however, was severely impacted by Cats Claw Creeper, and the Green Corps Team has been treating the Cats Claw Creeper problem.

Lwr Six Mile Mary River Cod Project Implementation Partners	Gympie & District Landcare Group
	Green Corps
Supported by	Cooloola Shire Council
	WWF

Lake Macdonald Catchment Care Group – Rivercare Projects

Brad Wedlock, Dale Watson & Phil Moran (Noosa & District Landcare Group)

The Rivercare project continues in the Lake Macdonald catchment with the support of Noosa Council. The most recent project involved linking two previous projects along Six Mile Creek on Cooroy Mountain Road.

Significance: The significance of this project is that it incorporates the Lake Macdonald Catchment Care Group. The project was coordinated by the MRCCC, with funding provided for the streambank fencing to the landholder through the Rivercare Program (with assistance from Noosa Council), and Noosa & District Landcare Group (through an Envirofund project) provided the seedlings and assistance with tree-planting to the landholder. These partnership approaches result in quality on-ground outcomes being achieved.

Implementation Partner	Noosa & District Landcare Group
Supported by	Noosa Shire Council
	Australian Government Envirofund

Bundaberg Rum Bush Fund projects

Brad Wedlock, Dale Watson, Eva Ford & Paul Marshall (Gympie & District Landcare Group)

Landcare Australia Ltd approached the MRCCC to be implementation partners in the inaugural Bundaberg Rum Bush Fund. Representatives from Bundaberg Rum and Landcare Australia Ltd were shown a number of possible Bundaberg Rum Bush Fund projects. The representatives also met a number of the key landholders involved in MRCCC-related activities.

These representatives chose the following projects to promote as Bundaberg Rum Bush Fund projects:

1. Tiaro Landcare Catch & Release Fishing Competition (October 2003)
2. Gympie Landcare Country Music Muster Tree-planting (August 2003)
3. Friends of Kilcoy Creek Action Day (October 2003)
4. Mary River Cod Restocking, Gerry Cook Fish Hatchery (November 2003)



L to R: Bundaberg Rum Managing Director, Tony Scanlon with Landcare Australia's Suzie Upcroft and Graeme Elphinstone at the launch of the Bundy Rum Bush Fund 2003

The Queensland Bundaberg Rum Bush Fund launch was organised by MRCCC and was held at the 2003 Country Music Muster at Amamoor. James Blundell (Bundaberg Rum Bush Fund Ambassador) and Tony Scanlon (Managing Director of Bundaberg Rum) launched the projects, with Graeme Elphinstone MC'ing the event. Also in attendance were representatives from Tiaro & Gympie Landcare Groups.

Significance: Through the MRCCC, Tiaro and Gympie Landcare were introduced to the Bundaberg Rum Bush Fund. Subsequently these Landcare Groups have received further funding from Bundaberg Rum Bush Fund and have carried on involvement with their respective projects – the Country Music Muster and the Catch & Release Fishing Competition.

Bundaberg Rum Bush Fund Implementation Partners	Tiaro & District Landcare Group
	Gympie & District Landcare Group
	Friends of Kilcoy Creek
	Gerry Cook Fish Hatchery
Supported by	Bundaberg Rum Bush Fund

Large Woody Debris projects – Amamoor & Obi Obi Creeks

Large Woody Debris (re-snagging) projects have been completed in the Amamoor and Obi Obi Creeks. The Amamoor Creek site is contained within the State Forest area above the Country Music Muster Site, and the Obi Obi Creek site is located below Obi Obi Crossing Number 2 near Kenilworth.

These LWD projects have trialled new techniques in construction. The three different LWD projects undertaken over the past 4 years have each trialled new techniques for construction.

The benefit of Large Woody Debris, or snags, in our creeks and rivers is no longer misunderstood. Most now recognise the importance of large woody debris (LWD) in our rivers and creeks. LWD is well recognized for its importance in providing habitat for many species, most notably in the Mary River catchment, the endangered Mary River Cod. LWD is also an important element in the development and maintenance of riffle and pool sequences in streams, crucial for healthy functioning streams. LWD is considered an important component in protecting stream banks from erosion, when LWD is located near a stream bank it can create a roughness to the flow, reducing the power of the stream and thus its ability to erode the bank.

The aim of the LWD installation at both of MRCCC's current sites is the dual purpose of protecting an eroding bank and the creation of instream habitat. Both sites have been extensively monitored prior to construction, with an Index of Stream Condition, macroinvertebrate, water quality, COG vegetation assessment, site history, existing LWD, electro-fishing by the DPI Fisheries, geomorphic assessment (cross sections, bed profile surveys) all being undertaken. Logs for the site were obtained from a road widening near Pomona and the Cooloola Shire Refuse Tip. Using the geomorphic data and the log dimensions, calculations were undertaken on various structure designs to determine if the installed LWD would stay in place in times of flood. The results were positive. A report of the pre-construction monitoring and design features for each site has been produced.



Above: Dale Watson drilling into rock at the Amamoor large woody debris project site

Both LWD Projects have now undergone their first stage of construction (after considerable delays due to rain and machinery difficulties). The Amamoor Creek site saw the installation of two log jams, two revetment logs and three habitat logs, while the Obi Obi Creek site saw the installation of one large log jam and the placement of five habitat logs attached to large boulders. There is still revegetation work to be undertaken at each of the sites and the sites will be closely observed during flow events, to make judgments whether more work is needed.

Maroochy Shire Council have been partners with the MRCCC LWD work since 2000. Without Maroochy Shire's support of and Department of Primary Industries & Fisheries this work could not be achieved.

Significance: Large Woody Debris re-introduction into waterways is now widely used throughout south-eastern Australia. Major projects have been completed in the Murray River in the last few years targeting Murray and Trout Cod.

There are still minor additions required for the Amamoor and Obi Obi Creek LWD sites which will be completed over the next few months.

Amamoor and Obi Obi Large Woody Debris Projects Implementation Partners	Maroochy Shire Council
	Griffith University
	Dept of Primary Industries & Fisheries
Supported by	Maroochy Shire Council
	Cooloola Shire Council

Powerlink Environmental Management Plan Project

Brad Wedlock & Eva Ford

The Powerlink project is intrinsically linked to the Living with Threatened Species (LTS) project through site selection and the need for fauna surveys to complete the Environmental Management Plans that we are contracted by Powerlink to develop. All of the sites occur where the powerlines cross environmentally sensitive areas, and nine of the ten sites are creeks crossings. Many of these are LTS project sites where rehabilitation has begun and/or where threatened species are known to occur (particularly frogs). Those sites that are not currently involved in the LTS project will be surveyed this coming frog breeding season and possible rehabilitation works may be initiated. It is another opportunity to reach the wider community and to attract funding to assess the condition of our waterways.

Special management plans, with recommendations from the landholder involved, are being drawn up for the sites. A questionnaire was developed by the MRCCC General Committee to ask the affected landholders pertinent questions, which helps to inform Powerlink of the issues facing the rural community with their activities.

Significance: Powerlink have chosen to link with local groups, like MRCCC, to deal with local natural resource management issues that affect their management. This is a win-win for both parties, as the MRCCC gains a better insight into issues facing the catchment by landholders, and so too does Powerlink.

Powerlink EMP's Implementation Partner	Kenilworth Croakers
Supported by	Powerlink

Living With Threatened Species

Eva Ford

The past 12 months has seen the Living with Threatened Species (LTS) project find its ground within the local community. Evolving to suit research gaps and the requirements of landholders, the school community and government agencies, it has become a project that can deliver expertise and advice, resources for land holders, educational activities for school students and contribute to scientific research on our threatened fauna species. Maroochy Shire Council has provided fantastic support to this program.

The project is now comprised of many sub-projects and has attempted to become more strategic in its approach especially in the area of on-ground works. The sub-projects occur in geographical areas beyond, but still including the original areas within Maroochy Shire of Kenilworth, Gheerulla and Belli Park, to take in areas within Noosa and Cooloola Shires.



Above: New fencing along Walli Creek

Other threatened fauna species are now targeted such as the Mary River Cod. It is hoped that the project can continue to develop in other shires in the Mary River catchment.

Kenilworth Croakers - Walli Creek sub-project

One of the greatest achievements of the LTS project has been its involvement with Walli Creek landholder, Doc Eckley. Doc is a charismatic convert to the rehabilitation of habitat through tree planting and property management and his enthusiasm and unwavering determination has slowly transferred to his neighbours and others who share his world. This type of advocacy is invaluable in our line of work because the message of environmental care comes from someone who shares the challenges and the aspirations of those who live in the local area.

Consequently, as neighbours started to murmur their interest in protecting and rehabilitating their respective sections of Walli Creek it became a logical option to seek funding for the group of 7 properties. This was secured through the Maroochy Shire Council's Community Assistance Scheme and through the Australian Government Envirofund.

Several field days have brought the neighbours together to learn about weed control and tree planting and to encourage a cooperative approach. Fencing is well underway to protect the 2km length of creek from stock damage, Madeira vine has been controlled and several hundred trees have been planted. The project will continue until March 2005. It is hoped that in the meantime a strategy is developed to tackle the enormous Madeira vine infestation just downstream from this initial property group. Interest among landholders along this reach is growing but assistance is essential in the first instance and resources are yet to be found. It is a classic case showing how much easier it is to combat weeds in their infancy rather than let them grow to unmanageable proportions.



Above: Walli Creek land holders at one of the revegetation sites

Kenilworth Croakers - Browns Road sub-project

The Browns Road (a tributary of Belli Creek that flows from State Forest to a known area of endangered frog habitat) rehabilitation project is driven by landholders Peter and Karen Turner who are interested in reverting their cleared, ex-dairy property into a haven for wildlife which can be enjoyed by visitors to their lodge. As they are located at the source of the tributary they are in a prime position to have an impact on the creation of a corridor from the State Forest to Belli Creek.

Again the contagious nature of rehabilitation work has attracted downstream neighbours so that 4 properties are now involved in the Envirofund funded project. Greenfleet is also involved with Peter and Karen to replant large areas of non-riparian landscape in this property with planting to commence in February 2005. This area still requires many years of input to achieve the ultimate goal of connectivity of habitat from the hills to the lowlands.

Kenilworth Croakers Implementation Partners	Kenilworth Croakers
Supported by	Maroochy Shire Council
	Noosa Shire Council
	Bundaberg Rum Bush Fund

Frog surveys

Spring and summer were busy times for getting out in the field at night to conduct frog surveys. When possible volunteers, environmental groups and council and agency staff were invited to participate. Normally a small group of 2 to 6 people came along.

Frog surveys are conducted at night as this is when the male frogs get really busy with their calls to attract a mate. Most frogs are active in the warmer months especially when it is wet during and after rain. The habitats of the endangered frogs that occur in the local area (Giant barred frog *Mixophyes iteratus* and the Cascade treefrog *Litoria pearsoniana*) were targeted to select survey sites. During the season the status of some frogs were reviewed and the Cascade treefrog was changed from vulnerable to endangered and the Tusked frog *Adelotus brevis* from common to vulnerable due to declining numbers in certain parts of its range.

We were fortunate to find the tusked frog at many of the sites that we visited. It will be very important to monitor some of these sites in the long term to identify changes in population levels.

Table 1 at the end of this report summarizes the findings from surveys conducted since the inception of the LTS project, most of which have occurred during the past 12 months. The effort put into surveying so many sites was well worth the contribution made to current knowledge of threatened frogs distribution. As much research already being carried out occurs in protected areas these results are a great compliment to existing records. Some of these sites will be chosen as long-term monitoring sites in consultation with the Stream Frogs of SEQ Recovery Team.



Green Corps team involved in weed control along Cedar Creek

Frog Surveys	Qld Parks & Wildlife Service
Implementation Partners	Kenilworth Croakers
Supported by	Maroochy Shire Council
	Cooloola Shire Council
	Noosa Shire Council

Threatened Species Education

Education is always a large component of any environmental project where the community is involved. It takes many forms from talking directly to school children, landholders, agency staff, and even our own MRCCC staff, to static display material requiring some interest by the observer to read the material. The LTS project has presented material to nine primary and secondary school classes and also contributes to the Cooloola Council/MRCCC Waterwise education program. The class sessions provide an opportunity for students to learn about water quality, riparian zones and their importance and threatened species of the local area. Checking water quality through water bug analysis is always a great interactive exercise that helps students appreciate the small world on which we ultimately depend.

The emergence of the Upper Mary (Maroochy) Waterwatch network provided a great opportunity to teach volunteers about water quality and the ecosystems that depend on it. Fauna surveys and property visits are also excellent platforms from which to raise awareness of the riparian zone and the fauna that live there as well as providing alternative land management options to help protect these sensitive areas. The Gympie and Nambour Green Corp groups and a Commonwealth Volunteers Abroad team have also been involved in

on-ground activities targeting threatened species habitat. As part of their visits to these areas they are taught about threatened species of the area and their needs.

Recently the LTS project has developed a poster depicting many of the threatened fauna species that depend directly on our riverine habitats. It also outlines in simple terms what people can do to protect these areas. The idea arose from a need to have concise display material when addressing groups about threatened species and also as a useful addition to our existing display material at public displays. A copy of the poster will be on display with other information at the newly opened Bellbird Teahouse near Kenilworth. A complimentary poster depicting threatened flora species and/or endangered Regional Ecosystems is a possibility in the near future.

Input to other agencies

The knowledge gained by the LTS project has been in great demand by local councils, Government agencies and the Burnett Mary Regional Group (BMRG) as they conduct various planning projects. Maroochy Shire Council is in the process of developing a Waterways and a Biodiversity plan for the shire to which the LTS project has input its knowledge of environmentally important areas and stream reaches according to the location of threatened species and significant habitat. Similar information has been divulged to EPA staff to aid in the mapping of High Environmental Value areas throughout the Mary River catchment. Cooloola Council has embarked on its Pest Management Plan and the LTS project has been able to contribute to the type, location and infestation level of various environmental weeds in the shire and suggest management options for their control. The project officer contributed a segment on threatened frogs to the Technical Paper; 'Freshwater Aquatic Biodiversity of Burnett Mary Region', as commissioned by the BMRG.

Threatened Species Future directions

It is envisaged that the LTS project will continue to work closely with landholders and to expand its operations to shires in the north and west of the catchment. Of great concern is the ever threatening progression of vine weeds in the riparian zones which threaten the existence of many plants and animals and the quality of water in the stream. More frog surveys are planned for the coming season as well as the establishment of several long-term monitoring sites. More effort is to be put into surveying streams in Noosa and Cooloola Shires, as well as existing monitoring points in Maroochy Shire.

MRCCC's Living with Threatened Species project is holding a Frog Forum at Belli Park, which is already attracting visitors from outside the Mary River catchment as well as within. It is likely to be a huge success with speakers from Queensland Parks and Wildlife Service, the Queensland Museum, Griffith University and the University of Queensland as well as some key landholders that have been involved in the LTS project. With space for over 100 people, it is a great opportunity for MRCCC to promote itself in the community and to make contact with interested community members and researchers.



Turner's property on Browns Road showing the Belli Creek tributary currently targeted for revegetation

Table 1. Summary of frog surveys conducted in 2003 & 2004

Waterway name	Shire	Adelotus brevis	Bufo marinus	Crinia parsignifera	Crinia signifera	Limnodynastes peronii	Limnodynastes	Litoria caerulea	Litoria chloris	Litoria dentata	Litoria fallax	Litoria gracilentata	Litoria latopalmeta	Litoria lesueuri	Litoria nasuta	Litoria pearsoniana	Litoria peronii	Litoria rubella	Litoria tyleri	Mixophyes fasciolatus	Mixophyes iteratus	Mixophyes sp	Pseudophryne raveni	Uperoleia laevigata	Total frogs at site
Boulder Ck, Mothar Mt	Cooloolo																			2					2
Amamoor Creek	Cooloolo			1									1												2
Bellbird Creek	Maroochy		1		2					2			1				1								7
Belli Creek	Maroochy																			1					1
Belli Creek	Maroochy	1			1					2		1	1								3				9
Belli Creek	Maroochy	3								1										1					5
Belli Creek	Maroochy	1								1										1					3
Belli Creek	Maroochy		1													1	1								3
Belli Creek	Maroochy												2												2
Belli Creek	Maroochy	1	1		1															1	1				5
Belli Creek	Maroochy	3								1						1	1		1	2					9
Belli Creek tributary	Maroochy			1	1													1							3
Belli Creek tributary	Maroochy			1	1					1							1		1						5
Belli Creek tributary	Maroochy			1																					1
Belli Creek tributary	Maroochy		1	1	1					1		1					1	1	1						8
Blackfellow Creek	Noosa	9			1											8									17
Blackfellow Creek	Noosa									1		1	1											1	4
Booloumba Creek	Maroochy	2	1		1															1					3
Boulder Creek	Cooloolo	1	4													3				7					15
Bundaroo Creek	Cooloolo															1?									1
Cedar Creek	Maroochy											1													1
Cedar Creek	Maroochy	1														1									2
Cedar Creek	Maroochy									1							1								2
Cedar Creek	Maroochy		1													1				2	2				6
Cedar Creek	Maroochy	4	1													2					2				9
Cedar Creek	Maroochy																			1	1				2
Cedar Creek	Maroochy	1																							1
Cedar Creek	Maroochy			1																					1
Cedar Creek	Maroochy	1								1						2	1				1				6
Cedar Creek	Maroochy															2									2
Cedar Creek	Maroochy															1									1
Cedar Creek	Maroochy															1									1
Chinaman Creek	Maroochy																			1					1
Coolabine Creek	Maroochy									2															2

Mary Community Waterwatch Program

Upper Mary (Maroochy) Waterwatch Network

Eva Ford

In August 2003 the Belli/Cedar/Gheerulla/Oakey Waterwatch network was created with 4 volunteers monitoring 10 sites along these waterways. In January 2004 this network and the existing Upper Mary network were reconfigured to create 2 new networks delineated by shire boundaries; the Upper Mary (Maroochy) and Upper Mary (Caloundra) networks. The Upper Mary (Maroochy) network now consists of 10 volunteers monitoring 17 sites on Belli, Cedar, Oakey, Gheerulla, Obi Obi, Coolabine and Walli Creeks and the main trunk of the Mary River. Many of these sites are known locations of threatened frogs and the long-term water quality data collected by the volunteers will be invaluable to our understanding of the requirements and tolerances of these species. A report is currently being drafted to present and discuss the data collected during the 6-month period from January to June 2004.

Upper Mary Waterwatch (Maroochy) Implementation Partners	Qld Parks & Wildlife Service
	Upper Mary (Maroochy) Waterwatch Network Volunteers
	Belli Picnic Store
	Kenilworth Post Office
Supported by	Maroochy Shire Council

Munna Creek District Waterwatch Network

Brad Wedlock, Harry Jamieson & Dale Watson

The Munna Creek Waterwatch Network commenced in 2002, with 7 graziers now participating, and the Brooweena State School.

The water quality data that these volunteers have collected has been interesting. There are noticeable fluctuations in salinity levels linked with the seasons, which is possibly a natural occurrence in Munna Creek. More water quality data is required to make a valued judgement.

Because Munna Creek is seasonal, normal water quality guidelines do not apply. Therefore specific guidelines need to be developed for Munna Creek. To do this requires a greater understanding of Munna Creek and how it functions, through the collection of more water quality data.

A nutrient tester has been purchased that will enable this group to do nutrient tests such as Phosphate and Nitrate. Nitrates are responsible for blue-green algal outbreaks, and phosphates also drive algae outbreaks.

Significance: Presently water quality guidelines exist for Australia, and draft guidelines also exist for Queensland, but the Mary River catchment does not have any water quality guidelines. The current Australian and Queensland guidelines have only been developed for waterways that contain water all-year-round, however there are many creeks that might flow seasonally, and currently there is no guidelines for seasonal creeks. Therefore with the information collected from Munna Creek, a better picture of how this important waterway functions can be gained, which then allows for more informed decisions to be made on the quality of the water.

Munna Ck Implementation Partners	Munna Creek Waterwatch Network Volunteers
----------------------------------	---

Gympie – Amamoor District Waterwatch Network

Brad Wedlock & Dale Watson

The Gympie – Amamoor District Waterwatch Network is composed of 15 volunteers throughout the Cooloola Shire. Sampling occurs in the Mary River, Amamoor Creek, Kybong Creek, Deep Creek, Six Mile Creek, Pie Creek, Eel Creek and Scrubby Creek. Some monitoring gaps exist in Yabba, Glastonbury and Kandanga Creeks, which need to be resolved.

Significance: Monthly monitoring has identified some saline waterways of Cooloola Shire. Deep and Pie Creeks during the dry season start to increase in salinity levels.

Gympie – Amamoor Waterwatch Implementation Partners	Qld Parks & Wildlife Service
	Gympie – Amamoor Waterwatch Network Volunteers
	Amamoor Store
Supported by	Cooloola Shire Council

Maryborough District Waterwatch Network

Lee Field

Funds from Maryborough City Council have enabled the MRCCC to continue to provide and maintain water monitoring equipment and employ a part time Coordinator for the Maryborough Waterwatch Network. Creeks and streams around Maryborough are now monitored by 10 volunteers who test 14 sites every month. Both urban and rural sites are monitored, mostly on public land.

St Helens School has also expressed interest in Waterwatch, and a class visit is planned later in the year.

Tony and Sue Wedlock play an integral part in the network, providing a pick up point for the Waterwatch kit. As with all other Waterwatch networks facilitated by the MRCCC, Waterwatch equipment is regularly calibrated and volunteers provided with information on techniques to ensure data confidence.

Significance: This partnership project will establish vital base line data on water quality in the Lower Mary, as well as improving community awareness of water quality issues.

Maryborough Waterwatch Implementation Partners	Qld Parks & Wildlife Service
	Maryborough Waterwatch Network Volunteers
Supported by	Maryborough City Council

Upper Mary (Caloundra) Waterwatch Network

Dale Watson

The Upper Mary (Caloundra) Waterwatch Network is composed of 14 volunteers including the Conondale State School, QPWS and Caloundra City Council staff. A special thanks to Barung Landcare who assist with being a drop-off and pick-up point for the Waterwatch equipment.

Sampling is conducted across the Blackall Range, down to Conondale and along the Mary River.

Caloundra City Council was awarded a Healthy Waterways Award for the work of the waterways team. Part of this work includes the Waterwatch activities they undertake with MRCCC.

Significance: This Waterwatch Group is mainly focused on monitoring headwater streams that provide the water supply for urban and irrigation users. Some of the streams monitored are used as reference sites for water quality parameters. Many Waterwatch volunteers use water obtained from the nearby creeks, therefore it is imperative that they know the quality of the water they use. This network is also valuable for monitoring the effects of the rapid urban development of the Blackall Ranges on water quality.

Upper Mary Waterwatch (Caloundra) Implementation Partners	Qld Parks & Wildlife Service
	Upper Mary (Maroochy) Waterwatch Network Volunteers
	Barung Landcare
Supported by	Maroochy Shire Council

Bi-annual Catchment Crawls

Brad Wedlock & Dale Watson

Bi-annual Catchment Crawls are coordinated by the MRCCC with a Salinity Catchment Crawl in May, at the end of the wet season, and a Water Week Catchment Crawl in October, at the end of the dry season. Creek junctions with the main trunk Mary River are targeted, to ascertain the effects of the creeks on the main Mary River. In total 14 sites are tested from above Conondale to the Mary River Barrage (the freshwater – saltwater interface) near Maryborough. As well as water quality testing, this allows participants to assess the condition of the riparian zone, and take photos to compare with the previous Catchment Crawls.

Staff from EPA, DPI and NRM participate in the Catchment Crawls, as well as Waterwatch Volunteers from the various networks

Significance: This 'snap-shot' of the condition of the Mary River provides invaluable information as to how the waterway functions and the condition of the water quality at that time. The sampling is taken over 2 days. The October 2003 Catchment Crawl showed an interesting rise in salinity from Gympie downstream which remained constant. Above Gympie the salinity level remained approximately 200 ms/cm. From Gympie downstream to Tiaro the salinity level jumped to approximately 700 ms/cm.

Catchment Crawl Implementation Partners	Dept of Primary Industries & Fisheries
	Dept of Natural Resources & Mines
	Environment Protection Agency

Cooloola Shire Water Education Program

Eva Ford & Debbie Seal

Cooloola Shire Council approached the MRCCC to develop a water education program targeting residents, commercial properties and visitors to the Shire. The Shire looked at options for conserving and protecting water supplies, as well as improving waste water disposal, with the goal of ultimately reducing water treatment costs.

A series of brochures is now being prepared covering all aspects of water use, waste water and water treatment. The first two brochures are now available covering water use and conservation, and household drainage systems. These two brochures are being distributed throughout the Shire through an innovative Primary School Assembly presentation, which aims to visit every Primary School in the Shire during the summer months. The assembly presentation includes artwork produced by Cooran artist, Peter Teakle, whose magnificent backdrops of "good creek/bad creek" illustrate the effect of falling water levels on aquatic fauna. To reinforce the messages of the presentation, each student is provided with copies of the brochures to take home to their families, together with a very clear message to "TURN OFF THE TAP"!

Individual class visits are also a component of the program, usually involving teaching students to find and identify macroinvertebrates, which are indicators of water quality. This year, the MRCCC has also undertaken contract work with secondary School Biology Field trips, studying all three aspects affecting water quality; macroinvertebrates, physico-chemical monitoring and riparian assessment.

Significance: Following one of the worst droughts this area has ever experienced, this Program increases awareness of the need for conserving water, and thoughtful disposal of household waste water and stormwater. The Program is also completely transferable to other Shires in the Catchment, which rely on water from the Mary.

Cooloola Shire Water Education Program Implementation Partners	Cooloola Shire Schools
Supported by	Cooloola Shire Council

Kidzone Environmental Expo

Eva Ford, Dale Watson & Deb Seal

For three years now, Cooloola Shire Council, Gympie Landcare, and a host of environment groups in the Mary Catchment have collaborated to bring Kidzone to the Gympie Civic Centre. This year, over 1400 students from local schools rotated through 9 separate 10-minute interactive sessions and talks, focusing on a broad range of environmental issues.

The MRCCC session involved a basic overview of the impacts of water quality on aquatic habitats, followed by an opportunity to find and identify waterbugs from creek samples collected earlier in the day. This session remains a favourite with the kids, although the bugs probably don't find it that amusing by the end of the day.

MRCCC staff also gave an evening presentation on our Water Education Programs to adult educators from around the region.



Dale Watson bugging kids at Kidzone

Strategic Cabomba Control Program

Cabomba Mapping

*Brad Wedlock & Conor Neville
(Lake Macdonald Catchment Care Group)*

This Drought Envirofund project conducted a survey from bridge crossings of the waterways in the Six Mile Creek (Mary River catchment) sub-catchment and the Upper Maroochy River, and thus established a baseline of where Cabomba exists in this area. This survey area was chosen because of its proximity to Lake Macdonald and the lake's infestation of Cabomba (believed to be the largest Cabomba infestation in Australia). A survey proforma was developed based on 'risk-posed' of Cabomba introduction to the waterway. Areas of greatest risk were those either near existing Cabomba infestations, or proximity to public access, ie. areas where people regularly frequent have a higher chance of Cabomba introduction than private property. Therefore, survey emphasis was placed on publicly accessible sites.



Above: Field day at Lake Macdonald with the Cabomba harvester in the background

Significance: This survey methodology was developed to assess the potential risk of deliberate introduction and floodwater introduction downstream of Cabomba into the waterways surrounding Lake Macdonald. There is a significant risk of Cabomba being introduced by floodwaters from Lake Macdonald downstream, and members of public innocently or deliberately spreading Cabomba.

This survey methodology was presented to a National Aquatic Weeds Group (NAWG) meeting earlier this year. The Coordinator of NAWG has now enlisted MRCCC to trial a revised version of this survey methodology for "Weeds of National Significance" (WONS) aquatic weeds.

Cabomba Mapping Implementation Partners	Noosa Shire Council
	Maroochy Shire Council
	Alan Fletcher Research Station
	Noosa & District Landcare Group
Supported by	Australian Government Envirofund

Cabomba Re-use Trials

Conor Neville & Phil Moran (Lake Macdonald Catchment Care Group)

The Lake Macdonald Pilot Cabomba Re-use Demonstration Project investigated the potential to use worms to digest the Cabomba solids and turn the weed into a useable product.

Analysis of the nutrient and metal content of the treatments was conducted to investigate the suitability of Cabomba as a nutrient rich source for use in potting mixes, as a soil additive and/or a soil reviver product. Re-use of the harvested Cabomba could provide a useful and saleable product and also reduce the amount of Cabomba requiring disposal at the refuse site.

Significance: The Pilot Cabomba Re-use Demonstration Project has proven that re-use of Cabomba is possible through vermiculture (worm-farming) techniques. Worms will digest the Cabomba and thoroughly mix it through the Worm Compost Mix. The report recommends that the development of large-scale vermiculture (worm-farming) operations to consume Cabomba and other organic wastes within the region.

Cabomba Re-use Implementation Partners	Noosa Shire Council
	Maroochy Shire Council
	Alan Fletcher Research Station
	Noosa & District Landcare Group
Supported by	Australian Government Envirofund

Progress Toward the Biological Control of Cabomba In Australia

Mic Julien and Shon Schooler (CSIRO Entomology)

The CSIRO has made significant progress toward finding biological agents for the control of Cabomba including:

- identifying the native range of cabomba employing a post doc in Australia to research the ecology of cabomba, funded by the Australian Government, (see Map 2)
- employing researchers in Argentina and Brazil to survey cabomba for biological control agents,
- conducting extensive surveys in South America to map the distribution of cabomba (see attached report),
- surveying for natural enemies of cabomba in South America and identifying several that may have promise as biological control agents, a weevil and a moth (see Figures 1-6).

Continuing research in South America will:

- continue to survey cabomba and its related herbivores,
- identify the species of herbivores collected,
- develop laboratory rearing methods for potential agents,
- test general host specificity of potential agents.

While this research is continuing in South America, the CSIRO will continue to study the ecology of cabomba in Australia. Ecological studies will help us understand the growth and spread of the weed, help devise integrated management strategies, allow assessment of management strategies, guide our selection of biological control agents, and help us select appropriate release sites for biological control agents. These studies are being done in collaboration with DNRM&E, Lake Macdonald Catchment Care and Noosa Shire Council.

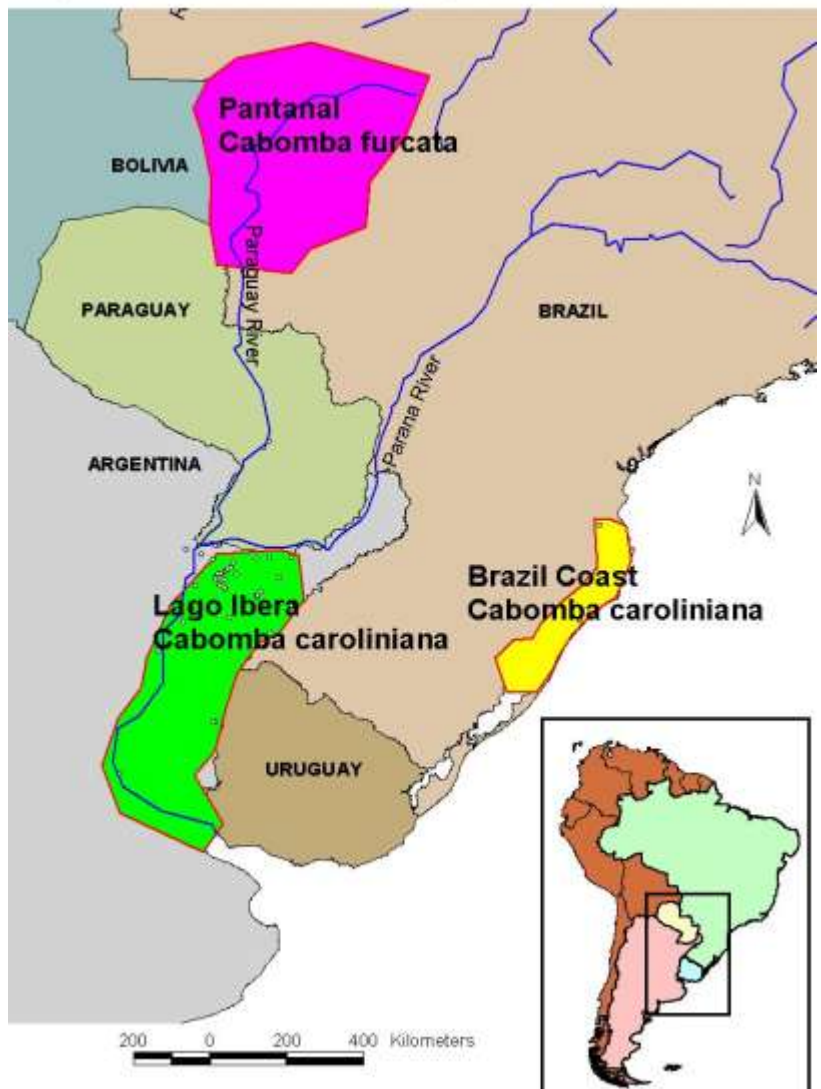
After suitable agents have been selected in South America, CSIRO will request permission from AQIS to import them for study in our quarantine facility to ensure that they are safe to release in the field. However this start of this phase of the project is several years away.

We expect the process to take 4 to 5 years, as follows, until we are permitted to release the first agent.

- 2 or 3 years surveying and selection of potential agents (we have completed the first year).
- 1.5 to 2 years conducting host specificity tests of the first agent.
- 0.5 to 1 year to gaining permission from the Australian Government to field release. While waiting for permits we will study the second agent, and so on.

Because of the rigorous safety requirements for host specificity, we cannot be certain that we will find an effective agent, but the prospects look promising.

Map 2. Probable Cabomba Population Centers



Potential Biological Control Agents - Photos by Willie Cabrera



Figure 1. Weevil adult
(Coleoptera: Curculionidae)



Figure 2. Weevil pupal case



Figure 3. moth larvae
(Lepidoptera: Arctiidae)



Figure 4. Moth adult



Figure 5. Aphid (Homoptera:
Aphidae)



Figure 6. Beetle (Coleoptera)

Cabomba Bio-Control Project Implementation Partners	CSIRO Entomology
	Alan Fletcher Research Station
	Noosa Shire Council
	Noosa & District Landcare Group
Supported by	Environment Australia Maroochy Shire Council Noosa Shire Council Caloundra City Council NQ Water Dept of Natural Resources & Mines Sunwater SEQ Water Corporation North Coast Weeds Advisory Committee, Taree Shire Council

Pest Management & Planning

Fraser Coast Pest Management Planning

Harry Jamieson & Brad Wedlock

The Fraser Coast Pest Management Planning Group is currently developing a Pest Management Plan for the Maryborough, Woocoo and Hervey Bay Council areas. Harry Jamieson and Brad Wedlock have participated in meetings held in Woocoo. Special thanks goes to Frank Sestak (MRCCC Sugar Delegate) who has also been representing MRCCC at these meetings.

This group has almost completed the plan. MRCCC has ensured that the WONS aquatic plant Cabomba has been brought to this group's attention. Cabomba could be a problem for Maryborough City Council at Teddington Weir, and also Hervey Bay Council at Lenthalls Dam, if promoted for recreational boating activities.

Cooloola Pest Management Planning (Environmental Weeds and Declared Weeds)

Eva Ford & Brad Wedlock

Eva Ford and Paul Marshall (Gympie & District Landcare Group) have represented MRCCC on the Cooloola Shire Environmental Weeds Working Group, while Brad Wedlock has represented MRCCC on the Declared Weeds Working Group. Cabomba has been brought to the attention of these groups, as it is likely that Cabomba will spread from upper Six Mile Creek (Lake Macdonald) into Cooloola Shire. Giant Rats Tail Grass, Cats Claw Creeper and Parthenium are the main concerns in Cooloola Shire.

NORSROC Pest Management Planning

Margaret Thompson

Margaret Thompson (MRCCC Secretary) and Phil Moran (Lake Macdonald Catchment Care Group representative) are active on the NORSROC Pest Management Planning Group organized by Greg Brown from Caloundra City Council. NORSROC represents the councils of Noosa, Maroochy, Caloundra and Caboolture in the Mary River Catchment.

Aquatic weeds have been brought to the attention of this group, although Caloundra and Noosa Councils are both very aware and active with aquatic weed management. Morning Glory is also a concern of the NORSROC Pest Planning Group.



Kilcoy Creek, upper Mary Catchment

MARY CATCHMENT LANDCARE FORUM - 17 MAY 2004

Held at the Donga, rear of the DPI Complex, corner of Cartwright Rd and Louisa Sts, Gympie

NOTES FROM FORUM

Forum Started: 10.00am

Present

Paul Marshall, Margaret Thompson, Ian Jones, Mim Coulstock, David McMullen, Brad Wedlock, Greg Woods, Deb Seal. Special guests, Tony McKew, Dr Deborah Scott, Tamara Boland

Apologies

Lin Fairlie, Lyn Klupfel, Tony Coutts-Smith

1. Tony McKew (Queensland Landcare Facilitator)

(i) Overview of Dept Ag Fisheries Forestry (DAFF). A result of review National Landcare Program (NLP) – positions made available. Accolades for Landcare were huge – Federal Government realised their investment has been successful.

NLP review report – has good statistics:

40% landholders involved in Landcare

85% public recognise Landcare logo

70% of Landcare farmers say that their farm resource has improved.

- Dept Ag. Fisheries Forestry funded positions for NLP is separate to NAP/NHT#2.
- 6 other Landcare Coordinators across Australia.
- \$60,000 offered to each region for employment of Landcare Facilitator.

Four other State Coordinators:

* Bushcare	}	
* Rivercare	}	
* Coastcare	}	
* Landcare	}	

Involved with regional arrangements to ensure each theme is incorporated into Regional NRM Plans.

- Regional forums across Queensland will be organised to gather Landcare group information and some direction forward.

(ii) DAFF funding priorities

Funded for 4 years.

\$40 million/year until 2008.

Currently working out how funding will be dispersed.

NLP fits within the Sustainable Ag. program.

Env. Mgt System Program separate to NLP.

Landcare Innovation Grants will be opened soon – similar to last year.

Community Grant is currently being worked out in Canberra – probably dispersed through Regional Groups.

Queensland receives 20% of NLP funding.

2. Discussion on BMRG State of the Region Plan – need to consider:

(i) Chapter 3 Lyngba outbreaks from pine plantations

Code of Practice for Pine Plantations

- Wide Bay Burnett Reg Veg Mgt Plan recommendations particularly Tinana Creek

Chapter 9

Wandering Jew/tropical chickweed groundcover suppressing native regeneration.

Consultation framework guiding Terms of Reference for consultants.

State of Region Report Recommendations

'Trial' audit the suggestions provided to the Regional Group.

List of 'things needed to look at' in Appendix.

Some opportunities to rectify with consultants.

Recommend a 'review' to State of Region in 12 months.

- Ecological footprint not identified.

Landcare Forum endorses the 'comments' and the MRCCC Executive will work with the consultants on Wednesday 19th May 2004.

(ii) Priority Action Proposals (NAPSWQ)

Meeting in Gayndah (18th May 2004) organised by BCCA (Burnett Catchment Care Association), Harry Jamieson and Paul Marshall will be attending, so too will BMRG, to discuss transparency issues with tendering process – subsequently cancelled.

Paul detailed the process of PAP 3.4 tender awarding, and lack of communication from consultants (LRAM) and Greening Australia (project implementer for PAP 3.4).

iii) NLP - Mim gave some information on the NLP project.

iv) BMRG Up-front Proposals (\$5,000 proposals)

Very confusing. Barung Landcare is putting in; Noosa Landcare is; Gympie Landcare. Ian Jones detailed how Noosa Landcare is putting in their proposals.

- Mim Coulstock detailed their proposals.

Paul and Brad detailed each proposal from MRCCC and Gympie Landcare

All proposals from each group were detailed on the white-board.

3. Alternate Regional Arrangements

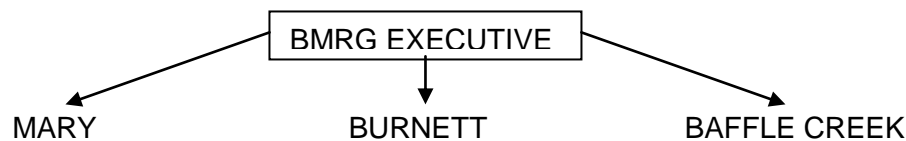
Paul detailed alternate regional arrangements, the different options:

1. Continue with BMRG – current arrangements.

2. Mary Catchment Regional Group (solely Mary River Catchment).

3. Combine with Noosa, Maroochy, Mooloolah, Mary, Burrum including Great Sandy Straits (Mary WRP).

4. Restructure BMRG with implementation groups for the Mary (MRCCC); Burnett (BCCA) and Baffle Creek (BCCG).



5. Amalgamate with NRMSEQ; with Mary Implementation Group (MRCCC).

Some discussion on how to improve what we have got now. The comments from the group were that regional arrangements are basically here to stay. Communication issues exist with the BMRG.

Options Paper:

Need to detail:

- Strengths/weaknesses of each option.
- Which option is viable?
- Where would regional group options end up?

Action: Paul to re-work 'Options Paper' and re-present.

4. MRCCC Landcare Representation

Early September 2004 MRCCC AGM.

Upper/Lower Mary Landcare representative.

Barung's turn has fallen this year for Upper Mary.

Upper Mary Landcare Rep - Robert Bell (Noosa Landcare) could want to stay on as the Upper Mary representative, as he is finding his way.

Paul Marshall could stay on as Lower Mary representative if nobody else is willing to take on the role.

- Sub-committee's are another way of involving people on MRCCC.
 - Paul raised whether a 2 year term per representative was more appropriate.
5. BMRG Initiatives - Deb Scott
- Board resolutions 'were no fully successful tenders' for the PAP's.
- The BMRG learnt invaluable information from this process – that the 'community' doesn't have the capacity to submit successful tenders.
- Program Manager will establish linkages and hold meetings to progress PAP 3.4.
- LRAM will be the Program Manager for PAP 3.4.
- A process for review of the NRM Plan will be established.
- 2nd volume of State of Region will be out by June 2004.
- Technical Papers will be completed by June 2004.
 - BMRG will submit 'draft' NRM Plan to the JSC by 30 June, 2004.
 - Project Implementer for PAP 3.4– they will be the signed 'entity'.
 - * Consortium was not a legal entity, therefore cannot sign-off.
 - * GA will undertake northern areas, consortium will undertake in the southern areas.
 - * GA has been chosen as the preferred implementer.
 - * Consortium members need to talk to Bruce Williams (GA) and Bill Thompson (LRAM).
 - * Prioritisation process was weak in both proposals, with different approaches in both proposals.
 - * Paul detailed that he had not heard from Bruce Williams (GA) re progress with PAP 3.4.
 - * Resourcing will be undertaken when GA signs off.
 - * Mobilisation component of the contract could be written in, pre-signing by project implementer.
 - * EOI said that the project should be implemented in tandem i.e. strategic planning and/on-ground – Deb agreed this was the case.

Timeline (PAP's will start):

- * Start July 2003 (didn't happen).
- * Funding received in October 2003.
- * Funding request to change to April 2004, with 12-month duration.
- * Funding stops 30 September 2004 if change is not granted.
- * Under Regional Investment Strategy – we will probably have 3-5 years of guaranteed funding.

How will the PAP information be fed into NRM plan?

- * Approximately ¼ of results will be fed into.
- 3-5 year strategy, 6 monthly reporting requirements (October-March) with a 12 monthly review and performance report on targets each 12 months.
- PAP 3.4 will be responsible for reporting on behalf of consortium.
- Documents from BMRG are not clear, matters for targets in particular.

Tamara Boland – Landcare Sector Community Support Officer

National Landcare Program Meeting

- 1 June – Gayndah meeting to progress NLP.
- Schedule 2 – Federal Government milestones – needs to be signed.
- Template for workplan needs to be drawn up.
- \$310,440 – 14 part-time Landcare officers.
- Viv Sinnanom – South-east Region – incl. Mary Catchment (as of September).
- Tamara Boland – Inland Burnett (as of June).
- Mark Mammino – Landcare Sector Representative
 - Board recognises that there are problems with communication, mechanisms will be put in place to resolve these issues.

Meeting closed at 4:00pm

**MARY RIVER CATCHMENT COORDINATING COMMITTEE
ANNUAL GENERAL MEETING 2004**

AGENDA

10 am Welcome, Apologies

10.05 Minutes of Previous Annual General Meeting

10.10 Business Arising

Correspondence

Presentation of Reports

10.20 Chairman's Report

10.30 Report on Project Activities (Brad Wedlock, Dale Watson, Eva Ford)

11.00 Report on WRP – Rob Herd, DNRM

Adoption of Reports

11.10 Review of Interest Sectors

Chair steps down. Angus Hutton (President – Gympie Landcare) takes the Chair for the AGM.

Election of Ordinary Member Delegates

Special Member and Associate Member Appointments

Vote of Thanks to Retiring Delegates

Election of Office Bearers

MRCCC Chair Resumes

Auditors Report

Appointment of Auditor

11.50 Mic Julian & Shon Schooler, CSIRO Entomology on Cabomba Bio control project

12.00 Launch of Cabomba Bio Control Project

The Hon Warren Truss, Minister for Agriculture, Fisheries and Forestry

12.30 Lunch

1.30 MRCCC General Meeting