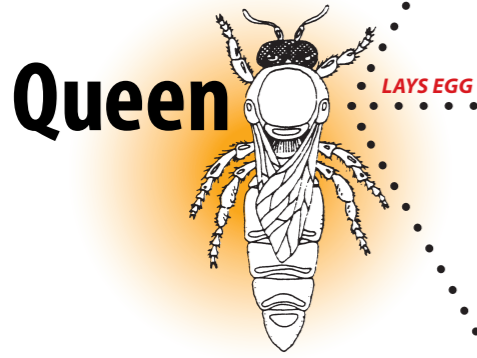


the complete bee life cycle



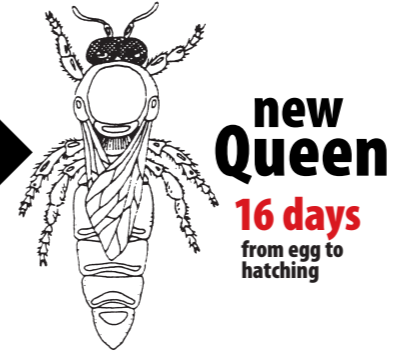
DAYS | 0 | 1 | 2 | 3 | 4 | 5 | 6 | 7 | 8 | 9 | 10 | 11 | 12 | 13 | 14 | 15 | 16 | 17 | 18 | 19 | 20 | 21 | 22 | 23 | 24



DRONES LIVE FROM A FEW DAYS TO SEVERAL WEEKS



WORKERS LIVE FROM 6 WEEKS TO A FEW MONTHS



A QUEEN LIVES FOR 2-3 YEARS OF PRODUCTIVE LIFE

These times above are variable, depending on conditions inside and outside the hive

EGG LAID BY QUEEN

IN 3 DAYS, ALL EGGS HATCH TO LARVAE

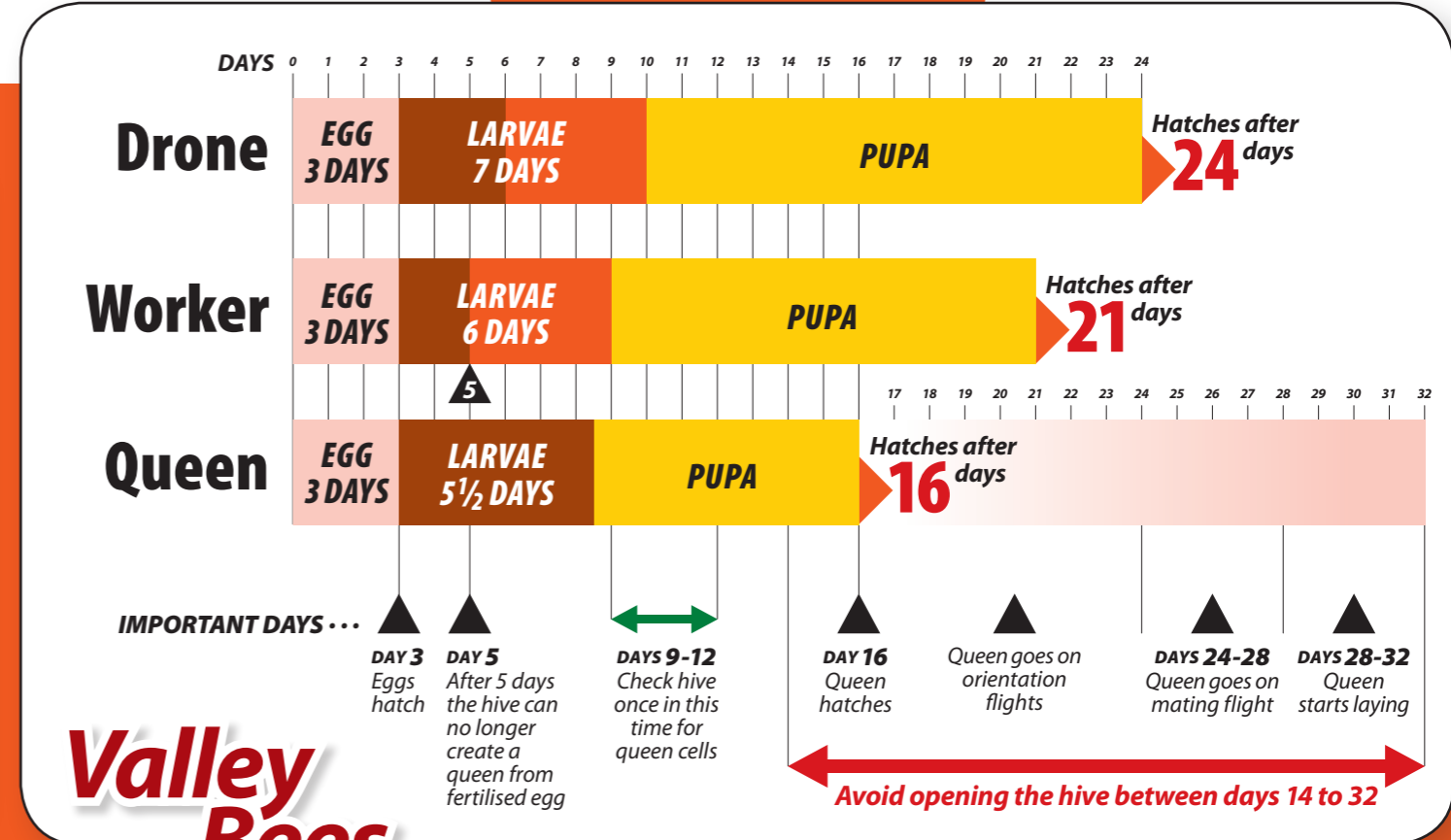
AT THIS STAGE, THE LARVAE ARE ACTUALLY CURLED UP INSIDE THE CELL

CELL IS CAPPED AFTER THE LARVAE STAGE

PUPA SPINS COCOON SOON AFTER CAPPED

NOTE: BEES EMERGE BY CHEWING THROUGH THE CELL CAP

In a nutshell:



Check these out:

- During the six days that worker bee larvae is fed, each individual larvae will be visited between 8,000-10,000 times!
- When the queen dies, and there are no eggs/larvae to raise as a new queen, worker bees may lay eggs (from which only drones hatch since they will be unfertilised). A worker bee is capable of laying 28 eggs in her lifetime.

The life of a worker bee:

- Up to day three - clean out the cells in the hive.
- From day four - as a house bee - feed the older larvae with bee bread, and do orientation flights outside the hive.
- From day seven - maxillary glands develop, so able to secrete royal jelly, begin to feed royal jelly to queen and larvae.
- Day 12 to day 18 - house bees develop special wax glands (located on the last four segments of the abdomen) and produce wax scales* (flakes), and work on building comb. During this time, bees also guard the hive, examine the nectar, and help keep the brood warm.
- Day 15 to 18 - worker bees start taking on their most responsible job - as field bees, out foraging for and collecting nectar and pollen. They continue with this until they wear themselves out, or are taken by one of the many bee-eaters.

* Note: There are around 4 million scales of beeswax required to make 1 kilo. 50 scales are required to build a single cell.

This info taken from *Bees and People* by Naum Ioyrich

This diagram taken from www.aboutbees.com

