

Valley Bees

VALLEY BEES MONTHLY SUNDAY MEETING

2nd Sunday of every month.
@ Honeybee Country Cottages,
Kandanga.*

1pm for a 1-30pm start.

\$2 entry. Please bring a plate to share.
Afternoon tea and coffee supplied.
Colourful displays. Bring along your
Show+Tell. Lucky door prizes.

* Honeybee Country Cottages,
20 Hasthorpe Road, Kandanga.
www.honeybeefarm.com.au
Beautiful rural setting. Gardens.
All facilities, air-con, on-site hives.

All welcome - for beginners and the
experienced, and for people just
generally interested in the well-being
of our environment. Very social.



TWICE-A-MONTH HONEYBEE PRAC SESSION

1st Saturday of every month
@ Gympie Landcare Nursery.*

3rd Saturday of every month
@ Honeybee Country Cottages.

9am Summer start.

10am Winter start (May Jun Jul Aug).
Generally 2 to 3 hours, flexible.

Free.

Morning tea supplied, but please bring
a plate to share.

* Gympie Landcare Nursery,
Cnr Old Maryborough Road and
Groves Road Gympie.

All welcome - for beginners and the
experienced, gear supplied, but please
bring a veil if you have one.

No bookings needed.

Seasonal - we can't always look inside
hives, so we will look at guest speakers
and discussions as well.

VALLEY BEES MEMBERSHIP

\$20 pp
\$30 couple/twin/family
\$5 student

As a once-off payment. We choose not
to renew the Memberships each year,
but simply keep them on-going.

To register for Membership, please
come along to one of the monthly
meeting, or to one of our special
events, or jeanneanderic@live.com.au

VALLEY BEES ATTENDING @ FESTIVALS + EVENTS

FEB CONNECTING THE COMMUNITY
APR EASTER ON MARY
MAY GYMPIE GARDEN SHOW
GYMPIE SHOW
JUN NOOSA FESTIVAL OF WATER
JULY QBA STATE CONFERENCE
TIARO FARM DAY
LITTLE KID'S BIG DAY OUT
AUG MARY VALLEY SHOW
OCT BEE OPEN DAY @ IMBIL
NOV MARY RIVER FESTIVAL



BIMONTHLY NATIVE BEE SESSION

Held every 2 months, on the morning
before our VB Monthly Meeting.

Site : Alternatively held at
Honeybee Country Cottages,
and Gympie Landcare Nursery.

10am - 12 noon.

Free.

No bookings needed.

Check calendar for venues, we
will hold the event alternatively at
Honeybee and at Landcare.

People will make their own way
from Landcare venue in time for our
afternoon meeting at Honeybee.

Morning tea supplied, BYO lunch.

Seasonal - we can't always look inside
hives, so we will look at guest speakers
and discussions as well.



VALLEY BEES ANNUAL BEE OPEN DAY

@ Mary Valley College (Imbil School).

Saturday 28 October 2017

All-day event, guest speakers and
experts, displays, food, hive and
equipment demonstrations, stalls and
equipment sales, workshops, general
interest events (music, face-painting
etc), bee plants for sale, on-site coffee
van, loads of raffles.

Community fund-raiser, supporting
local Mary Valley Groups. \$2 entry.

More information and promo flyer will
be available on MRCCC website:

www.mrccc.org.au/valley-bees/

Held annually.

All welcome, contact :
ourvalleybees@gmail.com
if you wish to display / present /
participate.



VALLEY BEES FIELD DAYS + WORKSHOPS

HONEY BEES

As per our monthly sessions.
Biology Of The Bee workshops held
throughout the year, dates TBA.

NATIVE BEES

As per our bi-monthly sessions.

Native Bee Workshops planned. TBA.

VOLUNTEERS

Volunteers are welcomed, and
appreciated, for all Valley Bees events.
Please register on our Volunteer Base.

ourvalleybees@gmail.com

LOCAL MARKETS

Gympie Town Centre Growers Markets

1st + 3rd Wednesday of the month
@ Memorial Park - 7am to 1pm
Twilight Grower's Markets
2nd + 4th Wednesday of the month
next to Memorial Park - 3pm

Dagun Growers Markets

Every Saturday from 3pm
@ Dagun Heritage Railway Station

Gympie Country Markets

@ Gold Museum/Duckponds
1st 3rd and 5th Sunday morning
@ Southside
2nd & 4th Sunday morning

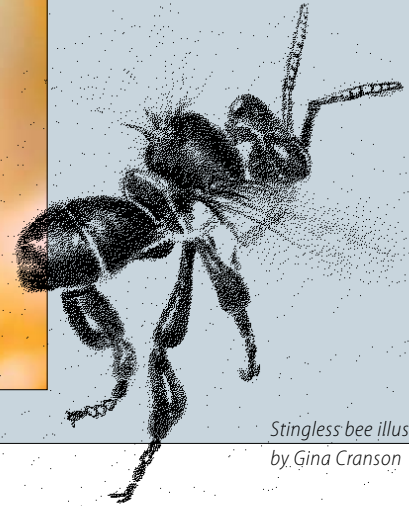
Kandanga Railway Station Markets

Every Wednesday and Sunday
10am to 12 noon

Imbil Markets

Every Sunday from 9am to 2pm
@ the centre of Imbil

**EAT REGIONAL,
EAT SEASONAL**



*Stingless bee illustration
by Gina Cranson*

Compiled by Glenbo for Valley Bees
Any additions / date claimers:

ourvalleybees@gmail.com

This calendar will be updated on the 1st of each month (hopefully), and is always available as a free download on:

<http://mrccc.org.au/valley-bees/>

Valley Bees Vision Statement is :

- to preserve and provide further habitat for all bees. This is achieved by providing suitable nesting habitat - both natural and managed.
- to protect all bees from pests, diseases and environmental deprivation.
- to provide services for pollination.
- to harvest excess stores for human consumption.

Valley Bees...

- includes people specialising in native bees, in honeybees, and in both!
- meets regularly, and holds field days and outdoor demonstrations throughout the year.
- invites speakers to share their knowledge, expertise and passion.
- will prepare lists of plants and trees in our local area to attract pollinators to our gardens.
- supports those who want to manage small numbers of bees on their properties.
- embraces a collective wisdom of enthusiasts and members of the community alike.
- expresses the specific areas of the value of all bees in regards to the health of our environment.
- advises on issues and topics that will make a difference!
- recognises the value of mutual support gained from the membership of a group of people with common interests. By participating in the activities of these groups, members benefit in their own lives, and contribute to their community.

VALLEY BEES

Honey bees, native stingless bees and native solitary bees, as well as Pollination and Habitat. 2nd Sunday of every month in Kandanga. Annual Bee Open Day at Imbil. Monthly practical sessions. Regular displays & workshops.

ourvalleybees@gmail.com

www.mrccc.org.au/valley-bees/

Chair - Athol Craig

Vice Chair - Pauline Alexander

Treasurer - Jeanne Jordan • jeanneanderic@live.com.au

Media and Events - Glenbo Craig

Membership Team Leader - Lyn Cooper

Minutes Secretary - Robyn Bowman

Honeybee Sessions - Vic Finney and Phil Browne

Native Bee Sessions - Derek Cooper

BARAMBAH BEEKEEPERS

Mostly honey bees, also some native bees.

2nd Saturday of every month. Kingaroy area.

Contact : www.barambah-beekeepers.org

SUNSHINE COAST BEEKEEPERS

Mostly honey bees, also some native bees.

Last Saturday of every month.

Contact : sunshinecoastbeekeepersi@gmail.com

QBA (Queensland Beekeeper's Assoc)

Join your local QBA, meets regularly throughout year. Annual Conference once a year / qbabees.org.au

MRCCC

Valley Bees is auspiced by the Mary River Catchment Coordinating Committee
Contact: Deb Seal
p: 5482 4766
admin@mrccc.org.au
www.mrccc.org.au



JULY

SUN	MON	TUE	WED	THU	FRI	SAT
30	31					1
2	3	4	5	6	7	8
9	10	11	12	13	14	15
16	17	18	19	20	21	22
23	24	25	26	27	28	29

- 1 First Saturday Honeybee Morning Session
Gympie Landcare Nursery - 10 am
- 1 **QBA Field Day** - Gympie Showgrounds
All day - Major Valley Bees input and display
- 8 **Tiara Farm Day** - All day
Valley Bees display and talks
7-8-9 Nambour Garden Show
- 9 **1-30pm : VB Meeting at Honeybee CC**
- 15 Third Saturday Honeybee Morning Session
Honeybee Country Cottages - 10am
- 16 **Mead Making Workshop**
Traveston - \$25pp - 10am to 2pm
Bookings essential
- 22 **Little Kids Big Day Out**
Gympie Civic Centre - All day
Valley Bees display and talks
- 26 **Winter On Mary**
Mary Street Celebrations 5pm to 8pm
Opening of Smithfield Street Precinct

AUGUST

SUN	MON	TUE	WED	THU	FRI	SAT
		1	2	3	4	5
6	7	8	9	10	11	12
13	14	15	16	17	18	19
20	21	22	23	24	25	26
27	28	29	30	31		

- 5 First Saturday Honeybee Morning Session
Gympie Landcare Nursery - 10 am
- Brisbane Ekka 11th to 20th
- 13 **10am : Native Bee Session Landcare Nursery**
- 19 **1-30pm : VB Meeting at Honeybee CC**
- 19 Third Saturday Honeybee Morning Session
Honeybee Country Cottages - 10am

24-27 Gympie Music Muster

SEPTEMBER

SUN	MON	TUE	WED	THU	FRI	SAT
					1	2
3 FATHER'S DAY	4	5	6	7	8	9
10	11	12	13	14	15	16
17	18	19	20	21	22	23
TIN CAN BAY 24 SEAFOOD FEST	25	26	27	28	29	30

- 2 First Saturday Honeybee Morning Session
Gympie Landcare Nursery - 9am
- 3 **Noosa Botanic Gardens Plant Fair**
Valley Bees Display
- 9 **Friends of Maroochy Botanical Gardens**
Native Plants for Native Bees
- 10 **1-30pm : VB Meeting at Honeybee CC**
- 16 Third Saturday Honeybee Morning Session
Honeybee Country Cottages - 9am

OCTOBER

SUN	MON	TUE	WED	THU	FRI	SAT
1	2 QUEEN'S B/DAY	3	4	5 5-6-7-8	6 Heart Of Gold Film Festival	7
8	9	10	11	12	13	14
15	16	17	18	19	20	21
22	23	24	25	26	27*	28
*29	30	31				

7 First Saturday Honeybee Morning Session
Gympie Landcare Nursery - 9am

8 10am : Native Log Hive Transfer, in Gympie
1-30pm : VB Meeting at Honeybee CC

13-14-15 Gympie Goldrush Festival
150 Year Celebrations

21 Third Saturday Honeybee Morning Session
Honeybee Country Cottages - 9am

28 **BEE OPEN DAY IN IMBIL**
SATURDAY 28 OCTOBER

We will be seeking volunteers on Friday 27th from 3pm at the Imbil venue, and well as from 10am on Sunday 29th. Thank you.

Please note: Our Bee Open Day was originally scheduled for 14 October, but changed due to the major Gympie-150 Goldrush events on that day.

NOVEMBER

SUN	MON	TUE	WED	THU	FRI	SAT
			1	2	3	4
5	6	7	8	9	10	11
12	13	14	15	16	17	18
19	20	21	22	23	24	25
26	27	28	29	30		

4 First Saturday Honeybee Morning Session
Gympie Landcare Nursery - 9am

11 **Mary River Festival, Kandanga** - All day
Valley Bees display and talks

12 1-30pm : VB Meeting at Honeybee CC

18 Third Saturday Honeybee Morning Session
Honeybee Country Cottages - 9am

DECEMBER

SUN	MON	TUE	WED	THU	FRI	SAT
					1	2
3	4	5	6	7	8	9
10	11	12	13	14	15	16
17	18 Glenbo's Birthday!!!	19	20	21	22	23
24	25	26	27	28	29	30
31						

2 First Saturday Honeybee Morning Session
Gympie Landcare Nursery - 9am

10 10am : Native Bee Session Landcare Nursery
1-30pm : VB Meeting at Honeybee CC

16 Third Saturday Honeybee Morning Session
Honeybee Country Cottages - 9am

25-26-31 Xmas, Boxing and New Years