

Valley Bees

VALLEY BEES MONTHLY SUNDAY MEETING

2nd Sunday of every month.
@ Honeybee Country Cottages,
Kandanga.*

1pm for a 1-30pm start.

\$2 entry. Please bring a plate to share.
Afternoon tea and coffee supplied.
Colourful displays. Bring along your
Show+Tell. Lucky door prizes.

* Honeybee Country Cottages,
20 Hasthorpe Road, Kandanga.
www.honeybeefarm.com.au
Beautiful rural setting. Gardens.
All facilities, air-con, on-site hives.

All welcome - for beginners and the
experienced, and for people just
generally interested in the well-being
of our environment. Very social.



TWICE-A-MONTH HONEYBEE PRAC SESSION

1st Saturday of every month
@ Gympie Landcare Nursery.*

3rd Saturday of every month
@ Honeybee Country Cottages.

9am Summer start.

10am Winter start (May Jun Jul Aug).
Generally 2 to 3 hours, flexible.

Free.

Morning tea supplied, but please bring
a plate to share.

* Gympie Landcare Nursery,
Cnr Old Maryborough Road and
Groves Road Gympie.

All welcome - for beginners and the
experienced, gear supplied, but please
bring a veil if you have one.

No bookings needed.

Seasonal - we can't always look inside
hives, so we will look at guest speakers
and discussions as well.

VALLEY BEES MEMBERSHIP

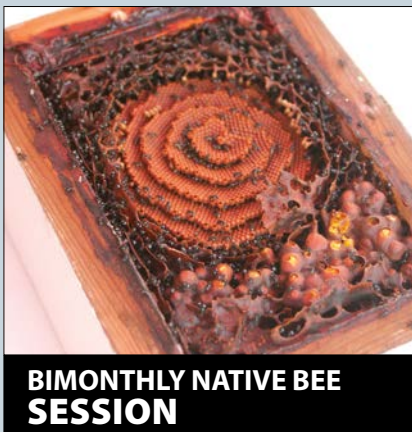
\$20 pp
\$30 couple/twin/family
\$5 student

As a once-off payment. We choose not
to renew the Memberships each year,
but simply keep them on-going.

To register for Membership, please
come along to one of the monthly
meeting, or to one of our special
events.

VALLEY BEES ATTENDING @ FESTIVALS + EVENTS

FEB CONNECTING THE COMMUNITY
APR EASTER ON MARY
MAY GYMPIE GARDEN SHOW
GYMPIE SHOW
JUN NOOSA FESTIVAL OF WATER
JULY QBA STATE CONFERENCE
TIARO FARM DAY
LITTLE KID'S BIG DAY OUT
AUG MARY VALLEY SHOW
OCT BEE OPEN DAY @ IMBIL - TBA
NOV MARY RIVER FESTIVAL



BIMONTHLY NATIVE BEE SESSION

Held every 2 months, on the morning
before our VB Monthly Meeting.

Site : Alternatively held at
Honeybee Country Cottages,
and Gympie Landcare Nursery.

10am - 12 noon.

Free.

No bookings needed.

Check calendar for venues, we
will hold the event alternatively at
Honeybee and at Landcare.

People will make their own way
from Landcare venue in time for our
afternoon meeting at Honeybee.

Morning tea supplied, BYO lunch.

Seasonal - we can't always look inside
hives, so we will look at guest speakers
and discussions as well.



VALLEY BEES ANNUAL BEE OPEN DAY

@ Mary Valley College (Imbil School).

Saturday 14 October 2017

All-day event, guest speakers and
experts, displays, food, hive and
equipment demonstrations, stalls and
equipment sales, workshops, general
interest events (music, face-painting
etc), bee plants for sale, on-site coffee
van, loads of raffles.

Community fund-raiser, supporting
local Mary Valley Groups. \$2 entry.

More information and promo flyer will
be available on MRCCC website:

www.mrccc.org.au/valley-bees/

Held annually.

All welcome, contact :
glenbo@live.com.au
if you wish to display / present /
participate.



VALLEY BEES FIELD DAYS + WORKSHOPS

HONEY BEES

As per our monthly sessions.
Biology Of The Bee workshops held
throughout the year, dates TBA.

NATIVE BEES

As per our bi-monthly sessions.

Native Bee Workshops planned. TBA.

VOLUNTEERS

Volunteers are welcomed, and
appreciated, for all Valley Bees
events, as indicated by
the yellow colour panels. 
Please register on our
Volunteer Base, through Jeanne or
Glenbo.



Compiled by Glenbo for Valley Bees

Any additions / date claimers:

glenbo@live.com.au

This calendar will be updated on the 1st of each month (hopefully), and is always available as a free download on:

<http://mrccc.org.au/valley-bees/>

LOCAL MARKETS

Gympie Town Centre Growers Markets

1st + 3rd Wednesday of the month
@ Memorial Park - 7am to 1pm

Dagun Growers Markets

Every Saturday from 3pm
@ Dagun Heritage Railway Station

Gympie Country Markets

@ Gold Museum/Duckponds
1st 3rd and 5th Sunday morning
@ Southside
2nd & 4th Sunday morning

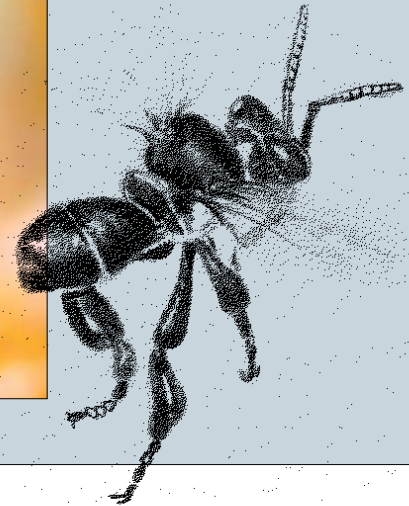
Kandanga Railway Station Markets

Every Wednesday and Sunday
10am to 12 noon

Imbil Markets

Every Sunday from 9am to 2pm
@ the centre of Imbil

**EAT REGIONAL,
EAT SEASONAL**



Valley Bees Vision Statement is :

- to preserve and provide further habitat for all bees. This is achieved by providing suitable nesting habitat - both natural and managed.
- to protect all bees from pests, diseases and environmental deprivation.
- to provide services for pollination.
- to harvest excess stores for human consumption.

Valley Bees...

- includes people specialising in native bees, in honeybees, and in both!
- meets regularly, and holds field days and outdoor demonstrations throughout the year.
- invites speakers to share their knowledge, expertise and passion.
- will prepare lists of plants and trees in our local area to attract pollinators to our gardens.
- supports those who want to manage small numbers of bees on their properties.
- embraces a collective wisdom of enthusiasts and members of the community alike.
- expresses the specific areas of the value of all bees in regards to the health of our environment.
- advises on issues and topics that will make a difference!
- recognises the value of mutual support gained from the membership of a group of people with common interests. By participating in the activities of these groups, members benefit in their own lives, and contribute to their community.

VALLEY BEES

Honey bees, native stingless bees and native solitary bees, as well as Pollination and Habitat.

2nd Sunday of every month. Kandanga / Gympie area.

Annual Bee Open Day at Imbil. Monthly practical sessions. Regular displays and workshops.

www.mrccc.org.au/valley-bees/

Chair: Athol Craig • glenbo@live.com.au

Treasurer and Members: Jeanne and Eric Jordan

• jeanneanderic@live.com.au

Media and Events: Glenbo • glenbo@live.com.au

BARAMBAH BEEKEEPERS

Mostly honey bees, also some native bees.

2nd Saturday of every month. Kingaroy area.

Contact : www.barambah-beekeepers.org

SUNSHINE COAST BEEKEEPERS

Mostly honey bees, also some native bees.

Last Saturday of every month.

Contact : sunshinecoastbeekeepers@gmail.com

QBA (Queensland Beekeeper's Assoc)

Join your local QBA, meets regularly throughout year.

Annual Conference once a year.

Contact : for any QBA information, contact Pauline, Athol,

Kayle, Tom, Eric or Glenbo.

QBA - qbabees.org.au

MRCCC

Valley Bees is auspiced by the Mary River Catchment

Coordinating Committee

Contact: Deb Seal | p: 5482 4766

admin@mrccc.org.au

www.mrccc.org.au

Valley Bees

*Stingless bee illustration
by Gina Cranson*

JANUARY

SUN	MON	TUE	WED	THU	FRI	SAT
1	2	3	4	5	6	7
8	9	10	11	12	13	14
15	16	17	18	19	20	21
22	23	24	25	26 AUSTRALIA DAY	27	28
29	30	31				

7 First Saturday Honeybee Morning Session
Gympie Landcare Nursery - 9am

15 1-30pm : VB Meeting at Honeybee CC

21 Third Saturday Honeybee Morning Session
Honeybee Country Cottages - 9am

FEBRUARY

SUN	MON	TUE	WED	THU	FRI	SAT
			1	2	3	4
5	6	7	8	9	10	11
12	13	14	15	16	17	18
19	20	21	22	23	24	25
26	27	28				

4 First Saturday Honeybee Morning Session
Gympie Landcare Nursery - 9am

12 9am : Native Bee Session in Pomona
1-30pm : VB Meeting at Honeybee CC

18 Third Saturday Honeybee Morning Session
Honeybee Country Cottages - 9am

25 'Connecting The Community' Day
9am to 4pm Gympie Showgrounds
Major Valley Bees display

28 Bee Talk @ Gympie Landcare
Athol and Glenbo (for Landcare Course 'Your
Rural Block' participants)

MARCH

SUN	MON	TUE	WED	THU	FRI	SAT
			1	2	3	4
5	6	7	8	9	10	11
12	13	14	15	16	17	18
19	20	21	22	23	24	25
26	27	28	29	30	31	

4 First Saturday Honeybee CC Morning Session
Gympie Landcare Nursery - 9am

12 1-30pm : VB Meeting at Honeybee CC

18 Third Saturday Honeybee Morning Session
Honeybee Country Cottages - 9am

APRIL

SUN	MON	TUE	WED	THU	FRI	SAT
30						1
2	3	4	5	6	7	8
9	10	11	12	13	14 EASTER	15 EASTER
16 EASTER	17 EASTER	18	19	20	21	22
23	24	25 ANZAC DAY	26	27	28	29

1 First Saturday Honeybee Morning Session
Gympie Landcare Nursery - 9am

9 10am : Native Bee Session Landcare Nursery
1-30pm : VB Meeting at Honeybee CC

12 'Easter On Mary' - Mary Street Parade
and Festival 5pm (Valley Bees display)

15 Third Saturday Honeybee Morning Session
Honeybee Country Cottages - 9am

HONEY MONTH MAY

SUN	MON	TUE	WED	THU	FRI	SAT
	1 LABOR DAY	2	3	4	5	6
7*	8	9	10	11	12	13
14 MOTHER'S DAY	15	16 ENTRIES 6PM	17 JUDGING	18	19	20
21	22	23	24	25	26	27
GOOMERI 28 PUMPKIN FEST	29	30	31			

The month of May is official Honey Month

6 First Saturday Honeybee Morning Session
Gympie Landcare Nursery - 10 am

6 Gympie Woodworks Museum Open Day

6,7* 6 and 7 - Gympie Garden Expo
Gympie Showgrounds
Main Valley Bees display on *Sunday 7th

14 1-30pm : VB Meeting at Honeybee CC

20 Third Saturday Honeybee Morning Session
Honeybee Country Cottages - 10am

18, 19, 20 Gympie Show
Major Valley Bees display
Honey Competition
Entries in by 6pm Tuesday 16th

25 25th - Honey Talk in the Gympie Library 10am

JUNE

SUN	MON	TUE	WED	THU	FRI	SAT
				1	2	3
4	5	6	7	8	9	10
11 AGM	12	13	14	15	16	17
18	19	20	21	22	23	24
25	26	27	28	29	30	

3 First Saturday Honeybee Morning Session
Gympie Landcare Nursery - 10 am

9-10-11 Nambour Show

11 10am : Native Bee Session Honeybee CC
1-30pm : VB Meeting at Honeybee CC AGM

17 Third Saturday Honeybee Morning Session
Honeybee Country Cottages - 10am

25 Noosa Festival of Water @ Lake
MacDonald - all day (Valley Bees display)

29 30 Annual QBA Qld Conference - Gympie
Showgrounds (No direct Valley Bees input)

JULY

SUN	MON	TUE	WED	THU	FRI	SAT
30	31					1
2	3	4	5	6	7	8
9	10	11	12	13	14	15
16	17	18	19	20	21	22
23	24	25	26	27	28	29

- 1 First Saturday Honeybee Morning Session
Gympie Landcare Nursery - 10 am
- 1 **QBA Field Day** - Gympie Showgrounds
All day - Major Valley Bees input and display
- 8 **Tiaro Farm Day** - All day
Valley Bees display and talks
7-8-9 Nambour Garden Show
- 9 **1-30pm : VB Meeting at Honeybee CC**
- 15 Third Saturday Honeybee Morning Session
Honeybee Country Cottages - 10am
- 22 **Little Kids Big Day Out**
Gympie Civic Centre - All day
Valley Bees display and talks

AUGUST

SUN	MON	TUE	WED	THU	FRI	SAT
		1	2	3	4	5
6	7	8	9	10	11	12
13	14	15	16	17	18	19
20	21	22	23	24	25	26
27	28	29	30	31		

- 5 First Saturday Honeybee Morning Session
Gympie Landcare Nursery - 10 am
- Brisbane Ekka 11th to 20th
- 13 **10am : Native Bee Session Landcare Nursery**
- 13 **1-30pm : VB Meeting at Honeybee CC**
- 19 Third Saturday Honeybee Morning Session
Honeybee Country Cottages - 10am
- Gympie Muster 24th to 27th

SEPTEMBER

SUN	MON	TUE	WED	THU	FRI	SAT
					1	2
3 FATHER'S DAY	4	5	6	7	8	9
10	11	12	13	14	15	16
17	18	19	20	21	22	23
TIN CAN BAY 24 SEAFOOD FEST	25	26	27	28	29	30

- 2 First Saturday Honeybee Morning Session
Gympie Landcare Nursery - 9am
- 3 **Noosa Botanic Gardens Plant Fair**
Valley Bees Display
- 10 **1-30pm : VB Meeting at Honeybee CC**
- 16 Third Saturday Honeybee Morning Session
Honeybee Country Cottages - 9am

OCTOBER

SUN	MON	TUE	WED	THU	FRI	SAT
1	2 <small>QUEEN'S B/DAY</small>	3	4	5 <small>5-6-7-8</small>	6 <small>Heart Of Gold Film Festival</small>	7
8	9	10	11	12	13	14
15	16	17	18	19	20	21
22	23	24	25	26	27	28
29	30	31				

- 7** First Saturday Honeybee Morning Session
Gympie Landcare Nursery - 9am
- 8** 10am : Native Bee Session Honeybee CC
1-30pm : VB Meeting at Honeybee CC
- 14** **BEE OPEN DAY IN IMBIL**
SATURDAY 14 OCTOBER
13-14-15 Gympie Goldrush Festival
- 21** Third Saturday Honeybee Morning Session
Honeybee Country Cottages - 9am

NOVEMBER

SUN	MON	TUE	WED	THU	FRI	SAT
			1	2	3	4
5	6	7	8	9	10	11
12	13	14	15	16	17	18
19	20	21	22	23	24	25
26	27	28	29	30		

- 4** First Saturday Honeybee Morning Session
Gympie Landcare Nursery - 9am
- 11** **Mary River Festival, Kandanga** - All day
Valley Bees display and talks
- 12** 1-30pm : VB Meeting at Honeybee CC
- 18** Third Saturday Honeybee Morning Session
Honeybee Country Cottages - 9am

DECEMBER

SUN	MON	TUE	WED	THU	FRI	SAT
					1	2
3	4	5	6	7	8	9
10	11	12	13	14	15	16
17	18 <small>Glenbo's Birthday!!!</small>	19	20	21	22	23
24	25	26	27	28	29	30
31						

- 2** First Saturday Honeybee Morning Session
Gympie Landcare Nursery - 9am
- 10** 10am : Native Bee Session Landcare Nursery
1-30pm : VB Meeting at Honeybee CC
- 16** Third Saturday Honeybee Morning Session
Honeybee Country Cottages - 9am

25-26-31 Xmas, Boxing and New Years