



Frog Finder's Guide

Our frogs need you!

The Mary River Catchment Coordinating Committee (MRCCC) is inviting people to help our frogs. Join in and collect frog information from as many parts of the Mary River catchment (and adjacent smaller catchments) as possible. We're aiming for 1000 frog sightings!!!

WHY? Frogs world-wide are in decline (one third!) and Australia is no exception. They are early indicators of environmental change and their welfare can directly reflect the health of the environmental support systems we rely on and enjoy. The information gathered during this frog search will contribute to a significant increase in knowledge of frog distributions, population levels, habitat requirements and breeding activity. The flow-on benefits will be to better guide land and waterway management to ensure environments are thoughtfully cared for.

WHO? Anyone in the Mary, Noosa River, Kin Kin and Burrum River catchments, and coastal drainages from Noosa to Burrum Heads (including off-shore islands).

WHEN? We have chosen February to collect records as it is likely to be hot and wet; ideal for frog activity. Night time is best for active searching or listening. During the day frogs hide away but can sometimes be spotted with keen eyes.

HOW? Where frogs are can be predictable or surprising. You can actively go to find them but they can also show up when you are not looking. Frogs need moisture but many of our frog species are adapted to periods of dry and can be found around temporary water bodies like puddles, soaks, ephemeral creeks. Others stay close to permanent water like dams, billabongs and flowing waterways. Sand piles, mulch, pot plants, wet roads are all places you may come across frogs.

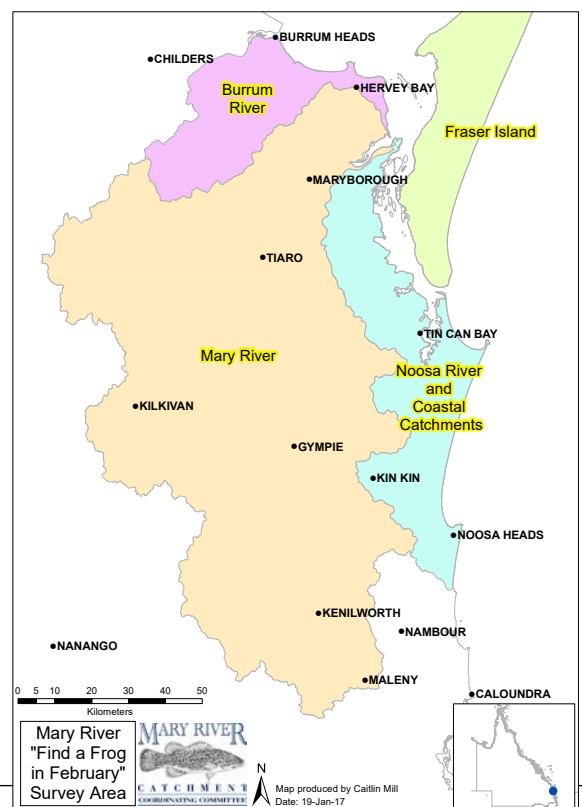
A torch or headlamp is good for spotting frogs - not too bright as it may hurt their eyes. Using a headlamp is best as you can then see the frog's eyeshine but, if you only have a torch, hold it up to your eyes so you can see the eyeshine. Walk slowly and quietly in forests, along creeks, around dams and billabongs. Listen for calls and try to find the calling frog. Record the call if you can. Watch intently for movement on the ground - if you see something, keep your torch and eyes on it as you get closer or it will likely jump away. Quickly take photos and/or remember/write down characteristics (see reverse for important frog body parts to observe). Then fill out the other details on the MR-FFF Record Sheet.

CONTACT THE MRCCC FOR YOUR 'FFF RECORD SHEET'

SUBMIT YOUR RECORD If you see a frog or hear its call fill out the 'FFF Record Sheet' and submit it to the MRCCC. This can be done online, by email, snail-mail or by visiting our resource centre in Gympie (contact details above). We will check the identification and details of the record and enter this information into the Queensland's wildlife database; WildNet where the information is stored safely and is accessible for planners, researchers and those interested.

IT IS IMPORTANT NOT TO HANDLE OR DISTURB FROGS - THEY ARE VERY SENSITIVE TO CHEMICALS AND ABRASIVES.

DON'T TOUCH FROGS, TADPOLES OR EGGS, OR MOVE THEM FROM ONE SITE TO ANOTHER - AVOID SPREADING FROG DISEASES.



Tips for frog surveyors

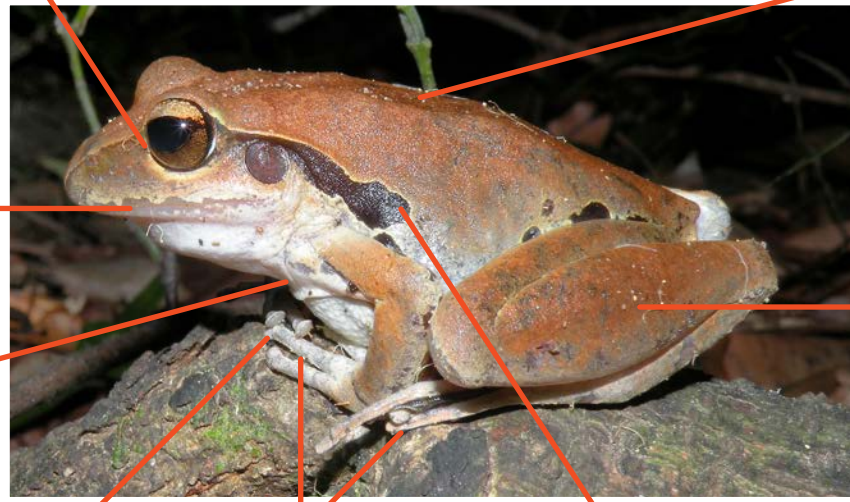
IMPORTANT FEATURES TO PHOTOGRAPH, NOTE DOWN OR DRAW

Eye colour (top and bottom may be different)

Back colours, patterns, ridges, warts

Colour and/or patterns of face and along upper lip

Belly colour, patterns and texture



Leg markings – bars, colour patches, glands (raised area)

Toe pads present or not

Webbing of toes and/or fingers

Side colours, patterns, extent of black facial line (if present)



PHOTOGRAPHING FROGS

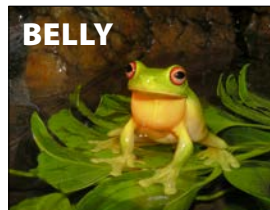
Take photos from the top, side and underneath if possible.



TOP



SIDE



BELLY

HOW TO COLLECT AN AUDIO RECORDING



You can use a mobile phone, digital recorder, and often your camera that is set to video mode. Get as close as you can and obtain a good representation of the call.

YOUR SAFETY is of great importance to us – we want you to take care and not be injured while collecting frog records. Be aware of hazards such as tripping, bites, steep banks, spiky things, getting lost and come home safely!

USEFUL RESOURCES See our website for a list of phone apps, websites, books and publications.

CHECK OUR WEBSITE for regular updates of frog records that come in. Can you help reach 1000 records?!

The MRCCC gratefully acknowledges the support for this program from: The Sunshine Coast Regional Council, Noosa Council, Gympie Regional Council and the Burnett Mary Regional Group. Appreciation to Cathey Osborne for her generous gift of Celtic frog design for our logo. Further support for MRCCC activities is provided by: the Australian Government Department of Environment, the Queensland Department of Main Roads, Environment and Heritage Protection and Science, Information Technology, Innovation and the Arts, and landholders throughout the Mary Catchment.



MRCCC Mary River Catchment Coordinating Committee
Working towards a sustainable and productive future for the Mary River Catchment.

Resource Centre 25 Stewart Terrace, Gympie
Postal PO Box 1027, Gympie, Q 4570
Phone (07) 5482 4766
Fax (07) 5482 5642
E-mail admin@mrccc.org.au
Website www.mrccc.org.au