

# Fauna fact sheet

## Tusked frog

**Scientific Name:** *Adelotus brevis*

**Common Name:** Tusked frog

**Status:** (NC(W)R 1994): Vulnerable

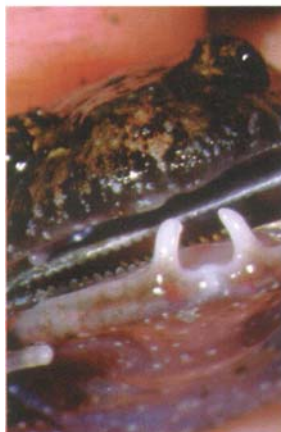
**Distribution:** Lowlands east of the Great Dividing Range from Eungella in Queensland south to Ourimbah in New South Wales.

**Habitat:** Open country and forests, along streams and ponds.

**Description:** Medium sized frog to 50 mm long. Grey, beige or brown with irregular dark markings. Belly marbled black and white with red blotches in groin and calf. Pair of tusks inside lower jaw.

**Habits:** Mostly terrestrial, males call from water's edge.

**Comments:** Cryptic frog more easily found by call. Easily confused with a small Cane toad due to coloration – distinguished by red patches in groin.



Photos courtesy of  
Harry Hines and J-M Hero

