

Mary River Catchment Coordinating Committee

Educational Services



MRCCC offers the following services to primary and secondary schools. We are also open to other suggestions. MRCCC is a not-for-profit community group with no funding to support educational activities. We will do our best to support you but would appreciate reimbursement for our time on a cost recovery basis.

Activity	Cost
Classroom: Guest speaker to provide a 30-40min classroom talk on a selected topic	\$120 plus travel
Excursion: Provide a talk/demonstration/guided walk as part of a class excursion; potential assistance in identifying excursion sites. Night time frog survey is an option here.	\$80 prep + \$50/hr for a MRCCC staff member (face to face) plus travel
Inclusion of schools in our Waterwatch network.	No charge
Purchase of MRCCC resources (DVD, books)	Reasonable cost per item
Use of MRCCC library – full of resources about water quality river health, threatened species etc	No charge
Use MRCCC resources available through the “Get to know the Mary River” Ed Studio	No charge
Combinations of the above	

Topics of Expertise to support school implementation of the Australian Curriculum

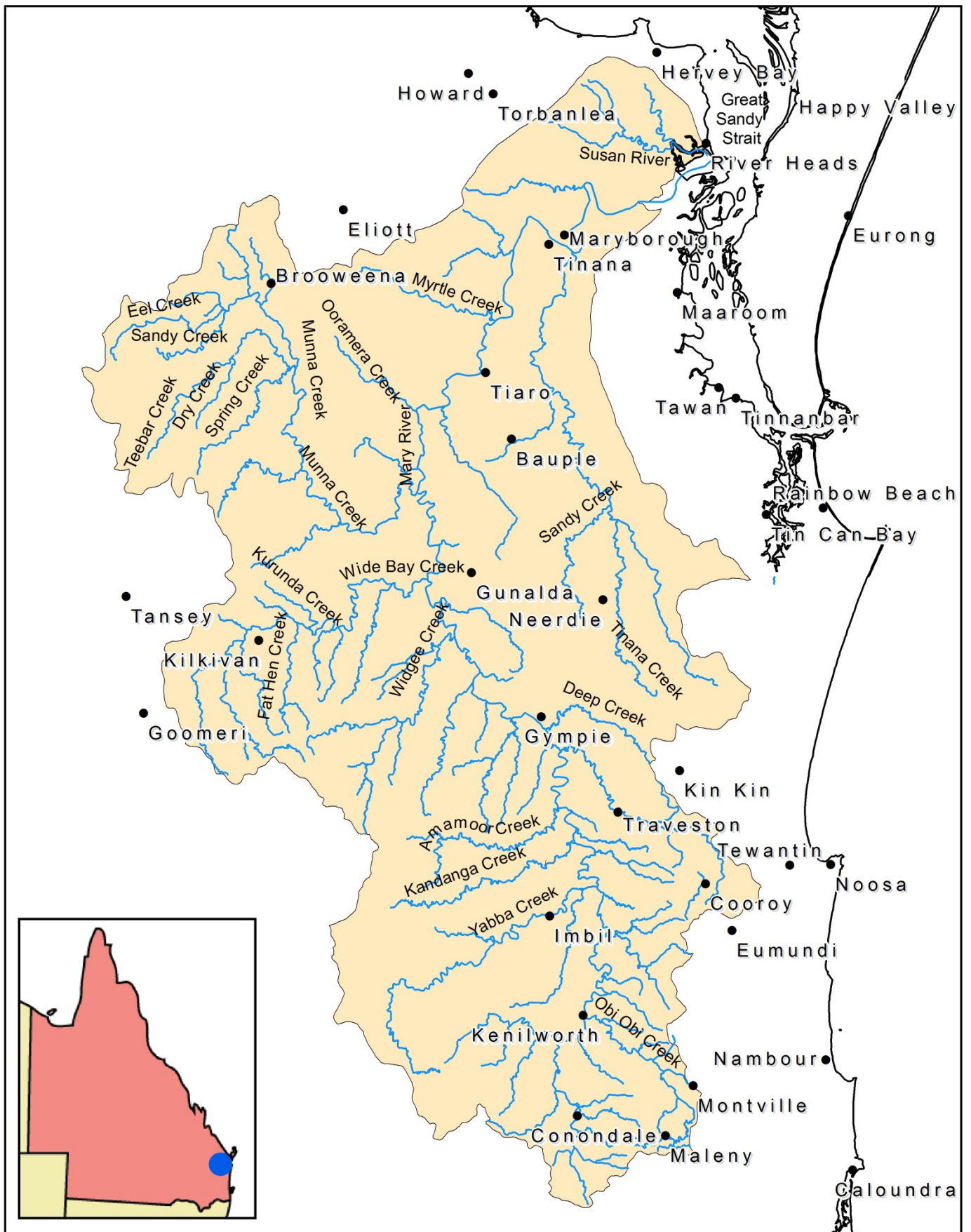
- Water quality
 - Water quality testing and interpretation
 - Macro-invertebrate collection, identification and interpretation
- Biodiversity
 - Food chains and food webs
 - Environmental/Ecosystem Services
 - Threatened species of the Mary River catchment
 - Frogs of the Mary River catchment
- Land management
 - Sustainable agriculture and waterways – how to care for our land and waterways, understanding threats and risks
 - Understanding erosion processes
- Catchments and rivers
 - Assessing riparian health (using MRCCC’s Rapid Riparian assessment)
 - Catchments, integrated catchment management and impacts on the Great Barrier Reef
 - History of the catchment and human interactions with the river



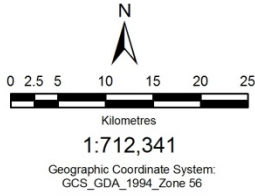
Mary River downstream of Gympie

What is the Mary River Catchment Coordinating Committee (MRCCC)?

- The Mary River Catchment Coordinating Committee is made up of people with an interest in the future of the Mary River. Our committee includes dairy and beef farmers, fruit and vegetable growers, and representatives from local councils, state government, Landcare, water utilities, traditional owners, forestry and the general community.
- We help to educate school children along the whole length of the river, from Maleny to Hervey Bay, about issues affecting our catchment and waterways (please see over-page for a map of the catchment).
- We also help over 100 Waterwatch volunteers who test the water quality in creeks and streams in their neighbourhood every month.
- MRCCC Staff and committee members also help landholders look after natural resources including soil, water, trees and habitat for native animals.
- Our Resource Centre at 25 Stewart Terrace, Gympie, is open Monday to Friday, 9am to 4pm. For more information, please visit our website (www.mrccc.org.au), call 07 5482 4766 or email admin@mrccc.org.au



While every care is taken to ensure the accuracy of this product, MRCCC makes no representations or warranties about its accuracies, reliabilities, completeness or suitability for any particular purpose and disclaims all responsibilities and all liability (including without limitation, liability in negligence) for all expenses, losses, damages (including indirect and consequential damage) and costs you might incur as a result of the product being inaccurate or incomplete in any way and for any reason. SPOT 5 Satellite imagery provided by the BMRG. Includes materials © CNES 2007, reproduced under license from SPOT Image and Raytheon, all rights reserved.



Mary River Catchment